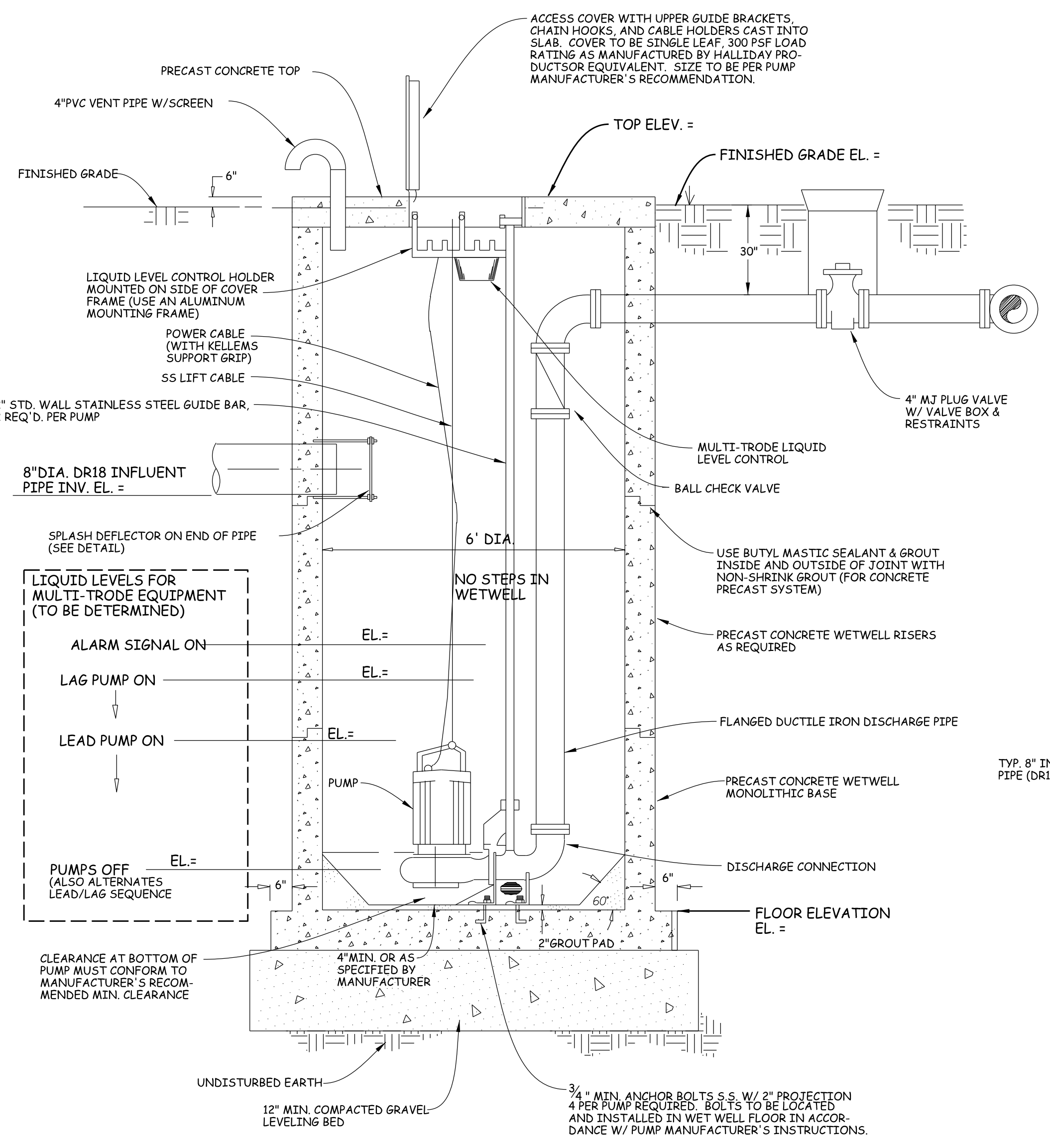


**TYPICAL PLAN - DUPLEX PUMP STATION**  
N.T.S.

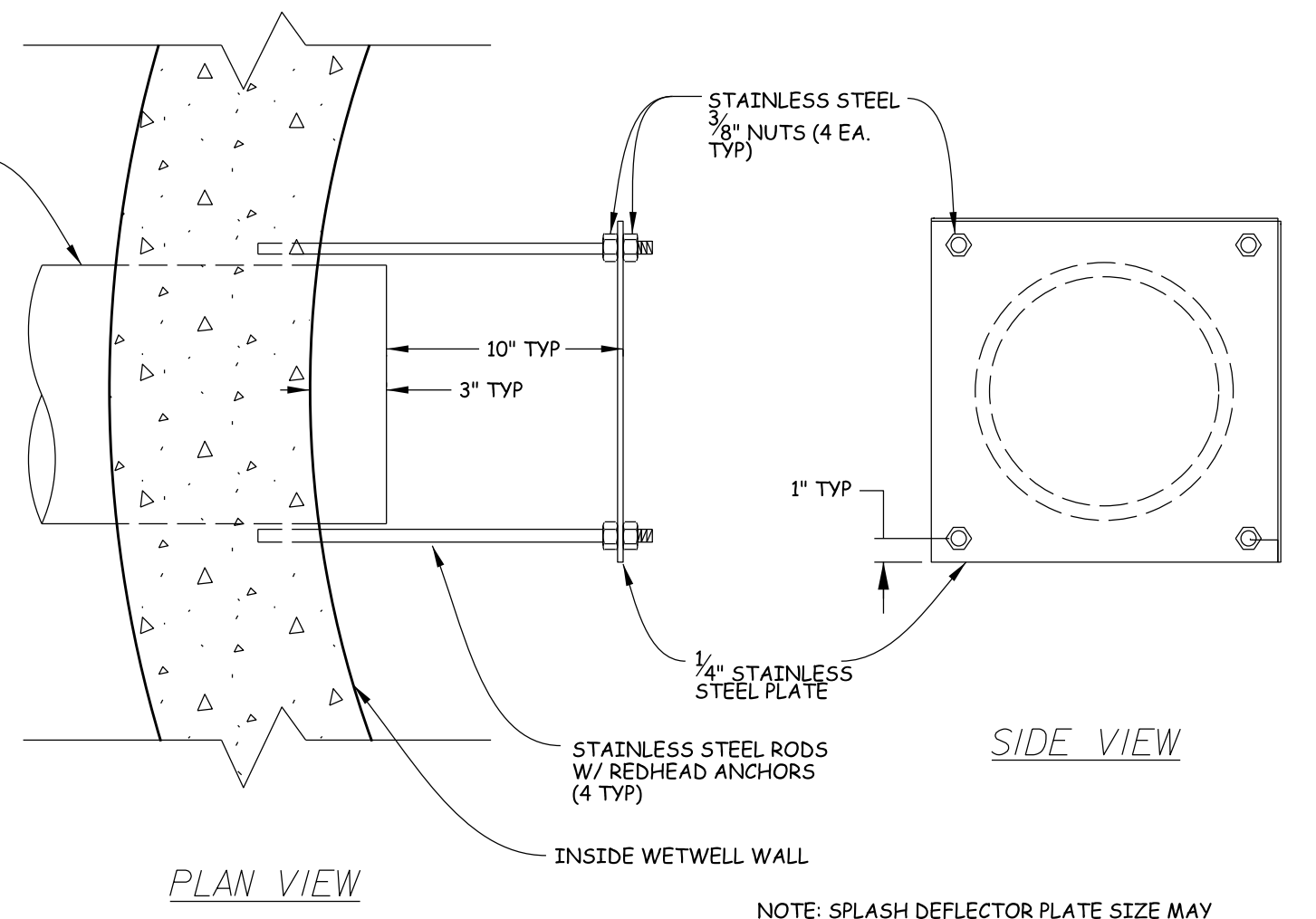


**TYPICAL SECTION THRU PUMP STATION**  
N.T.S.

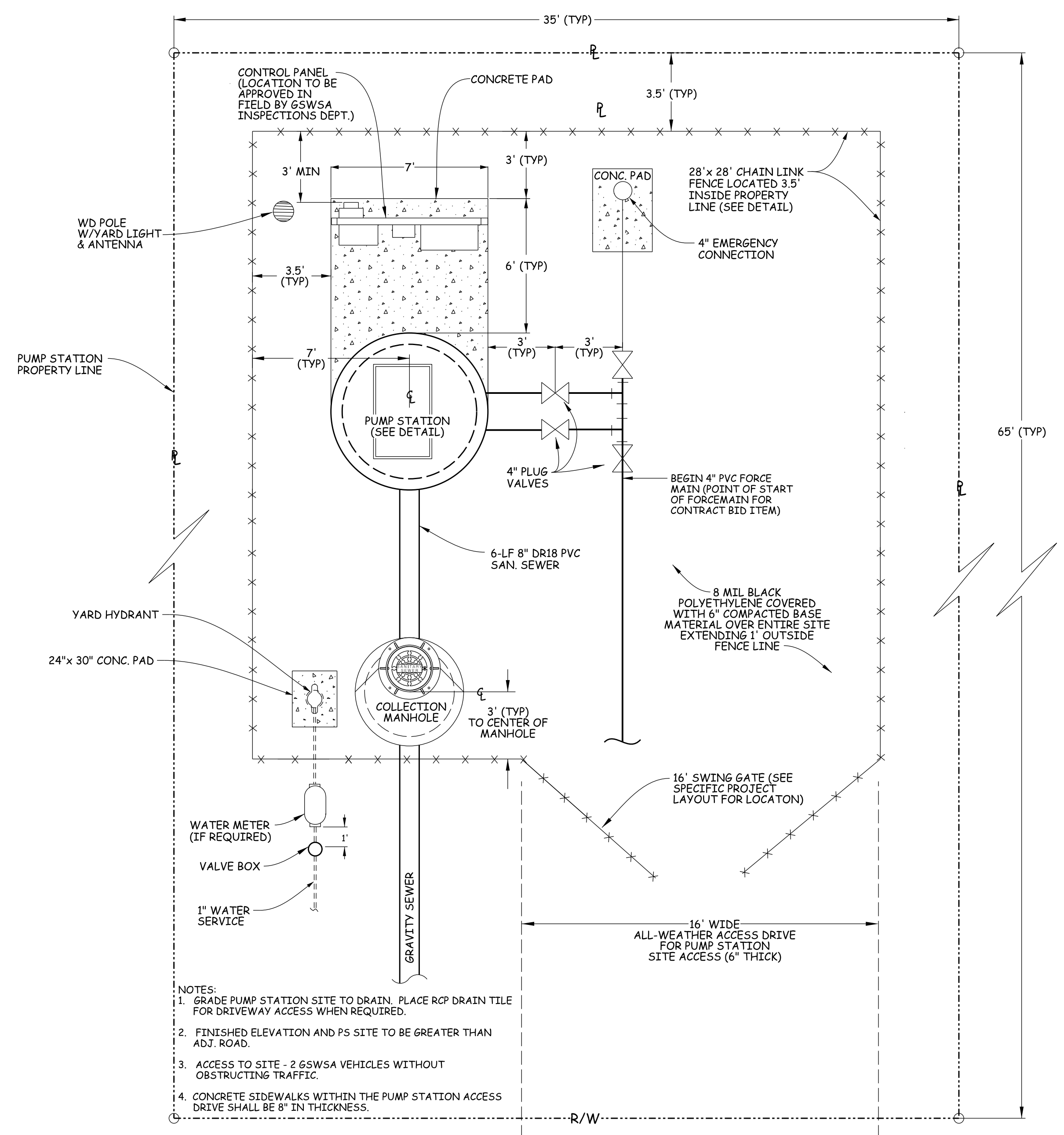
**PUMP STATION SCHEDULE**

PIPE I.D.	DR-18
INFLUENT	
ELEVATION	
INSIDE DIAMETER	
TOP ELEVATION	
HIGH WATER LEVEL	
LOW WATER LEVEL	
FLOOR ELEVATION	
ALARM SIGNAL ON	
LAG PUMP ON	
LEAD PUMP ON	
PUMPS OFF	
MODEL (PUMP/MANUF.)	
IMPELLER (SELECTION)	
DISCHARGE PIPING	
CHECK VALVE SIZE	
PLUG VALVE SIZE	
DESIGN FLOW*	
DESIGN HEAD* (TDH)	
VOLTAGE	
PHASE	
HORSEPOWER	
RPM (PUMP/MOTOR)	

- PUMP STATION NOTES**
- ALL WORK AND MATERIALS SHALL CONFORM TO REQUIREMENTS OF GRAND STRAND WATER & SEWER AUTHORITY SEWER SYSTEM STANDARDS & SPECIFICATIONS.
  - ALL HINGES, GUIDE HOLDERS, CABLE HOLDERS, ALL NUTS, BOLTS, WASHERS, AND OTHER FASTENERS SHALL BE 302 STAINLESS STEEL.
  - THE NEMA 4X ENCLOSURES SHALL BE STAINLESS STEEL OR FIBERGLASS, AND RAIN TIGHT. A REMOTE TELEMETRY PANEL SHALL BE REQUIRED.
  - ALL WETWELL HARDWARE SHALL BE MOUNTED SUCH THAT ANY COMPONENT CAN BE REMOVED.
  - THE POWER CABLE IS TO BE WIRED NON-STOP FROM THE PUMP TO THE BOTTOM OF THE STARTER WITH NO JUNCTION BOXES OR SPLICES IN BETWEEN. POWER CABLE WITHIN WET WELL SHALL BE SUPPORTED USING KELLEMS SINGLE EYE CLOSED MESH SUPPORT GRIPS (SIZED FOR CABLE DIA.) AND ATTACHED TO THE PUMP CABLE SUPPORT HOOKS.
  - WETWELL SECTIONS SHALL CONFORM TO ASTM C-478.
  - ALL PIPING WITHIN THE WETWELL SHALL BE CLASS 90 DUCTILE IRON PIPE.
  - PUMPS AND MOTORS SHALL HAVE A STAINLESS STEEL CABLE FOR LIFTING. THE LENGTH SHALL REACH TO THE TOP OF THE STATION PLUS AN ADDITIONAL SIX FEET. CABLES SHALL BE 5/16\"/>



**TYPICAL SPLASH DEFLECTOR PLATE**  
N.T.S.



**PUMP STATION SITE PLAN**  
N.T.S.



**PUMP STATION DETAILS**

REVISION	DATE	BY
REVISED TYPICAL PIPING AND VALVES FROM 6\"/>	5/23/2016	DRT
REVISED SITE PLAN DIMENSIONS FOR ELECTRICAL PANEL OFFSETS	8/18/2016	DRT
NOTE REVISIONS	9/1/2016	DRT
SITE LAYOUT REVISIONS	7/23/2019	DRT
REVISED SITE DIMENSIONS, FENCING, EMERGENCY CONNECTION AND ELECTRIC CONDUIT SIZING	8/22/2022	DRT



**PUMP STATION DETAILS**

CONT. # / PROJ. #

SC DHC CONSTR. PERMIT # ISSUED:

DATE:

SCALE: NTS

FILENAME: PS-DETS.DGN

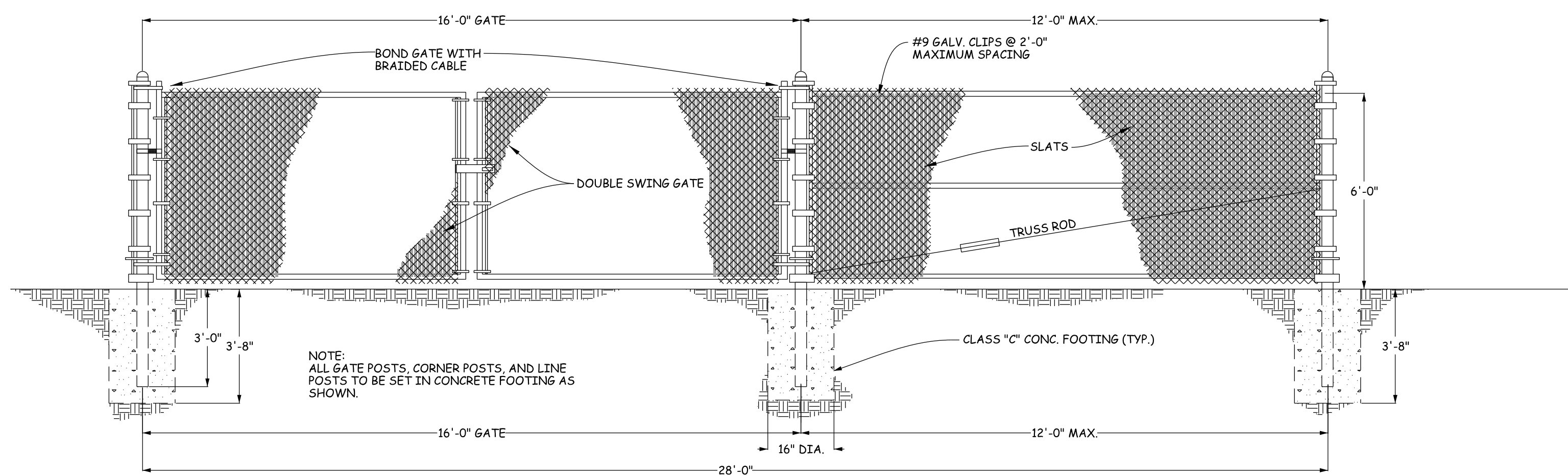
DESIGNED BY:

CHECKED BY: JASON POSTON

APPROVED BY:

CHRISTINA S. EVERETT PE #21255

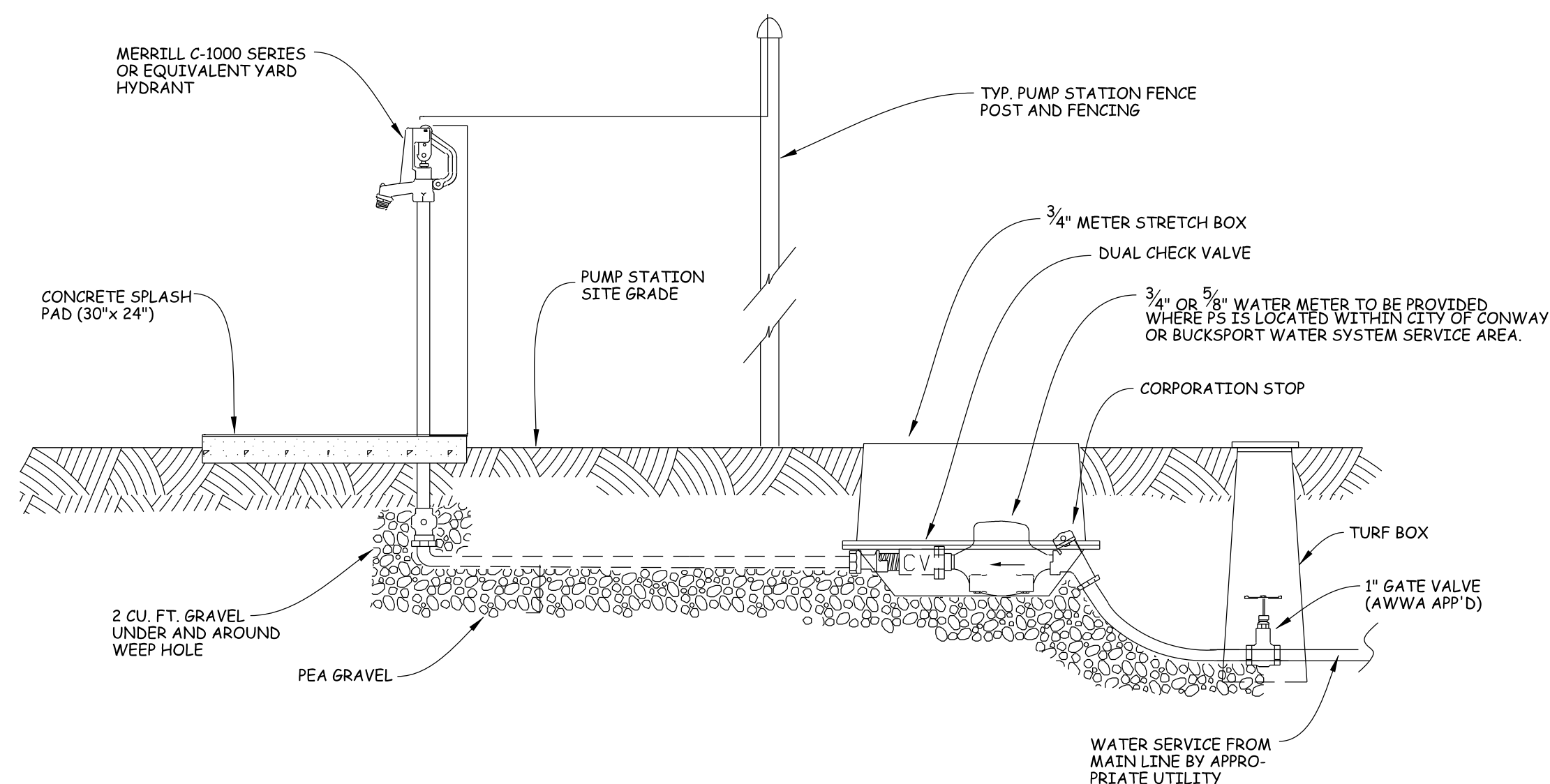
SHEET OF



6'-0" GALV. CHAIN LINK FENCE & GATE DETAIL

N.T.S.

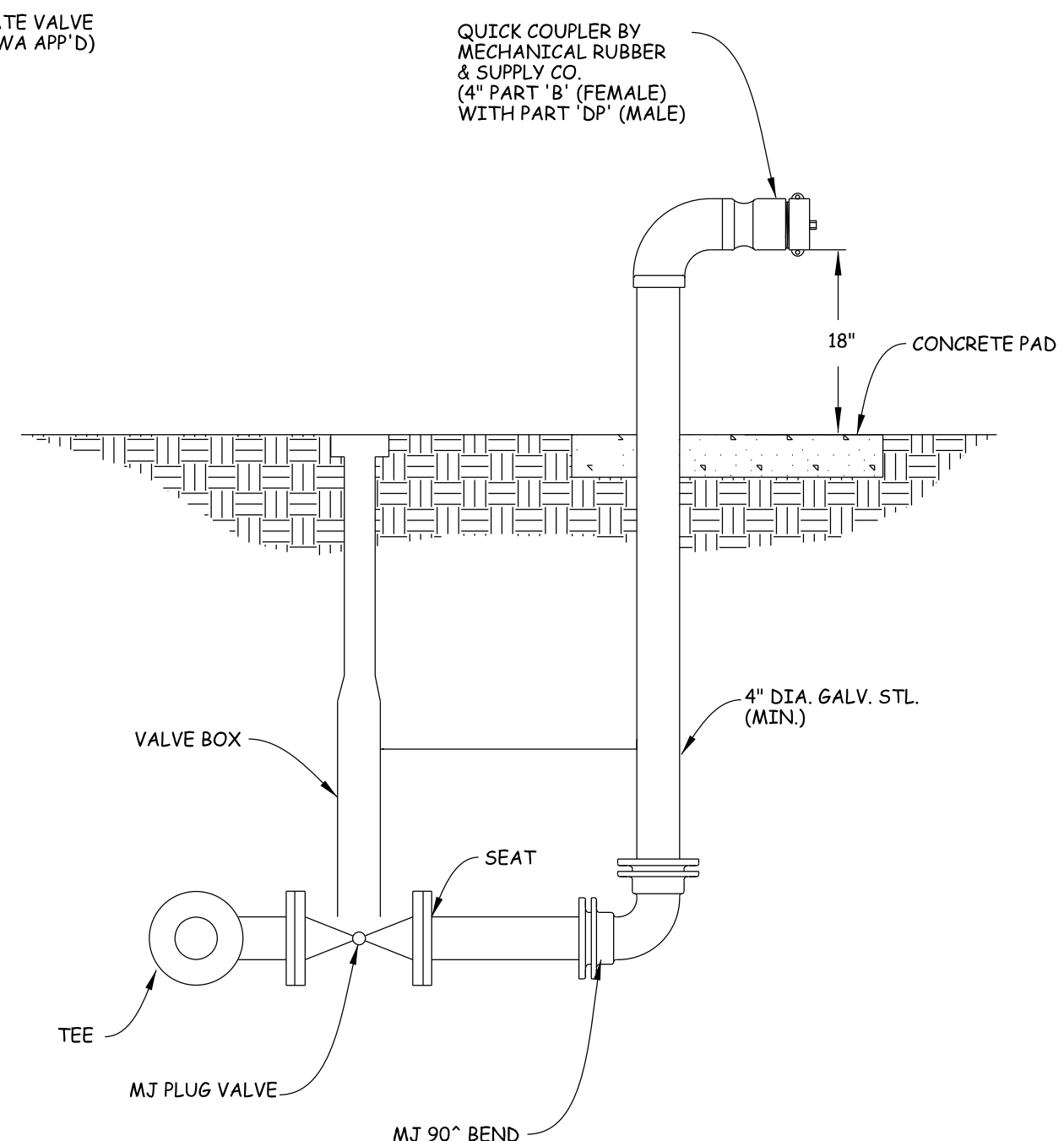
- NOTES:
- SEE STANDARD SPECIAL PROVISIONS AND STANDARDS FOR SPECIAL REQUIREMENTS.
  - FINAL SITE FENCING DIMENSIONS TO BE DETERMINED BY GSWSA.
  - SIGN WITH STATION NUMBER AND EMERGENCY PHONE NUMBER WILL BE PROVIDED BY OPERATIONS AFTER FINAL ACCEPTANCE.
  - SLATS SHALL BE EQUIPPED AND ARE TO BE BLACK IN COLOR.



PUMP STATION YARD HYDRANT DETAIL

N.T.S.

- NOTES:
- METER BOX ASSEMBLY TO BE 3/4" STRETCH BOX WITH LOCKING VALVE AND WATTS NO. 7 DUAL C.V. (OR APP'D. EQUAL) AS SUPPLIED BY CITIES SUPPLY. DHEC APP'D BACKFLOW PREVENTION DEVICES REQ'D.
  - METER WILL BE A 3/4" OR 1/2" POSITIVE TYPE DISPLACEMENT METER CONFORMING TO AWWA SPEC'S C700-71 KENT ALL BRONZE METER OR APP'D EQUAL.
  - IF WATER SERVICE IS ON GSWSA SYSTEM, NO WATER METER WILL BE REQUIRED. CONTRACTOR SHALL INSTALL DUAL CHECK VALVE, GATE VALVE, AND TURF BOX INSIDE PUMP STATION FENCE.



EMERGENCY CONNECTION DETAIL

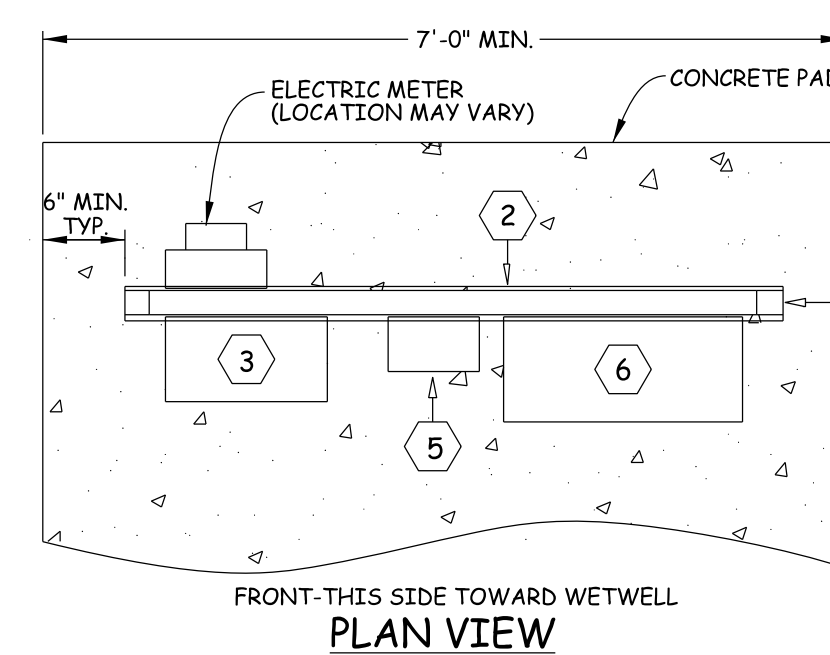
N.T.S.

ELECTRICAL KEY NOTES

- ALUMINUM SQUARE TUBE 3"x 3"x 3/8"x 9'-3" LONG WITH ALUMINUM 3"x 3"x 7/8" TOP CAP. SET SQUARE TUBE IN CONCRETE.
- ALUMINUM FLAT BAR 3"x 1/2"x 6'-4". ALL BOLTS, NUTS, WASHERS, ETC. NECESSARY TO FABRICATE RACK AND INSTALL EQUIPMENT SHALL BE STAINLESS STEEL.
- SQUARE D NEMA 3R DOUBLE THROW SWITCH.
- CROUSE HINDS #APQ 1047 RECEPTACLE.
- NEMA TYPE 4 GALVANIZED ENCLOSURE. SQUARE D QO OR QI CIRCUIT BREAKERS.
- PUMP CONTROLLER MOUNT TOP SIX FEET ABOVE SLAB. NEMA 3RX STAINLESS STEEL WITH 3 POINT LATCH AND DRIP SHIELD. PAD LOCKABLE.
- EYS SEALOFF FITTINGS WITH DUXSEAL.
- (2) 3" PVC CONDUITS TO WETWELL FOR PUMP POWER CABLES. (1) 3" PVC CONDUIT TO WETWELL FOR FLOAT CABLES.
- 3" PVC CONDUIT WITH (4) #2THHN CONDUCTORS TO UTILITY COMPANY TRANSFORMER OR HAND HOLE AS DIRECTED BY UTILITY COMPANY.
- GROUND ROD AND CLAMP.

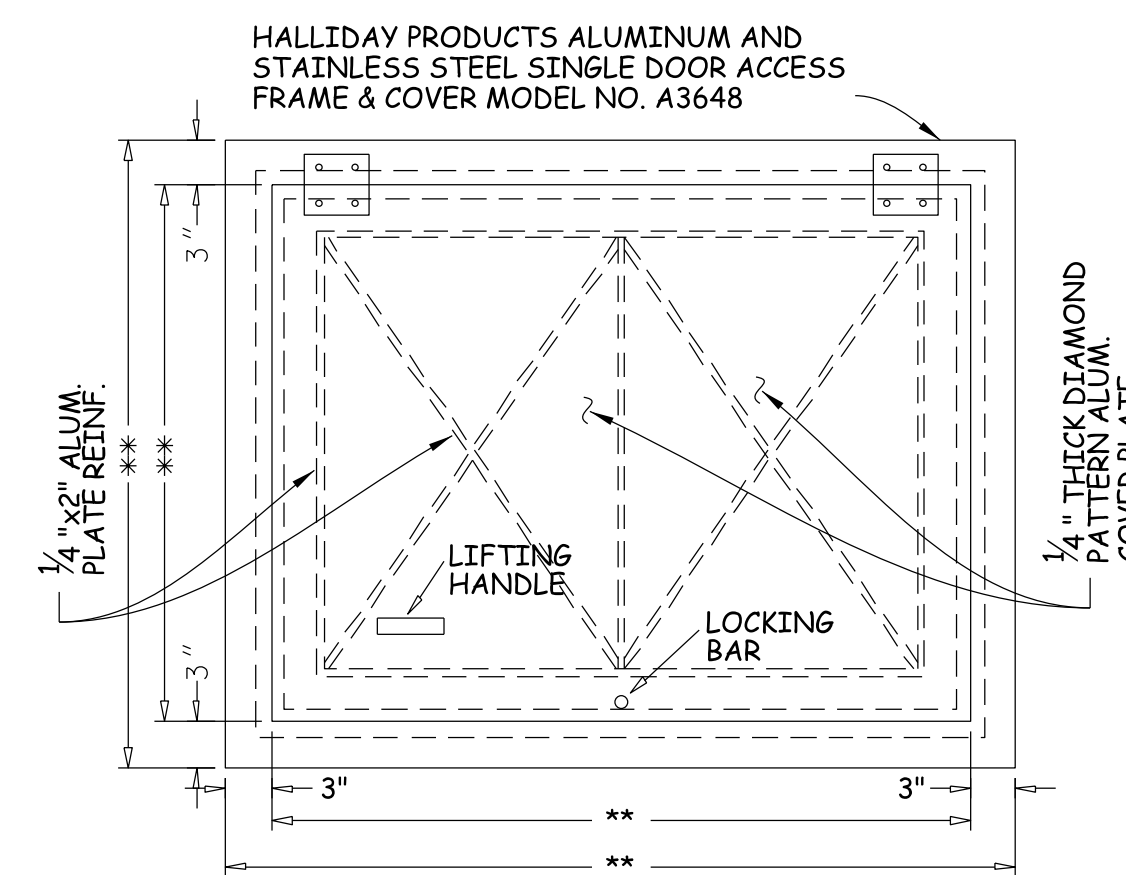
GENERAL ELECTRICAL NOTES

- ELECTRICAL WORK SHALL BE PERFORMED BY AN ELECTRICAL CONTRACTOR WITH AN APPROPRIATE BUSINESS LICENSE.
- ELECTRICAL PERMITS SHALL BE APPLIED FOR AT HORRY COUNTY BUILDING INSPECTION OFFICE.
- SEE PUMP STATION SPECIFICATIONS FOR ALL PLC/RADIO CONTROL REQUIREMENTS AND ALL ELECTRIC AND CONTROL REQUIREMENTS. PLC/RADIO PACKAGE NOT SHOWN.



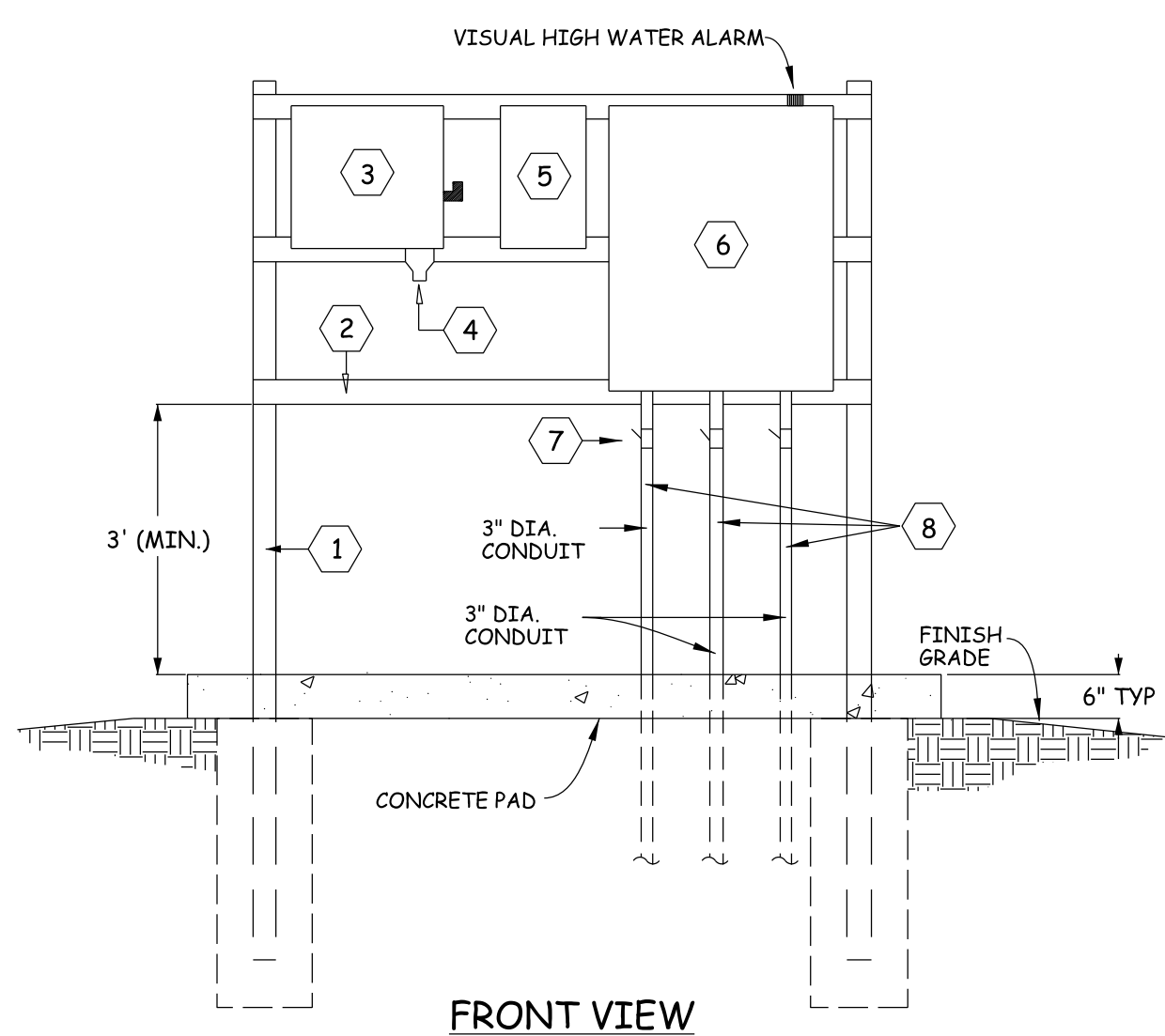
PUMP STATION CONTROL PANEL DETAIL

N.T.S.



CONCRETE PUMP STATION HATCH DETAIL

(\*\*SIZE AND LOCATION WITHIN TOP SLAB OF PUMP STATION TO BE PER MANUFACTURER'S RECOMMENDATION) N.T.S.



CONCRETE PUMP STATION RISER SECTION

N.T.S.

- NOTES:
- ALL STANDARD SEWER PUMP STATION WETWELL TO MEET OR EXCEED THE REQUIREMENTS OF ASTM C478.
  - BUTYL RUBBER SEALANT IS RECOMMENDED FOR SEALING JOINTS. O-RING GASKETS MAY BE USED.

REVISION	BY	DATE
REVISED TYPICAL PIPING AND VALVES FROM 6" TO 4" - REVISED WATER SERVICE NOTE	DRT	5/23/2016
NOTE REVISIONS	DRT	9/12/2016
CONCRETE SLAB SIZE REVISIONS	DRT	7/31/2019
REVISED SITE DIMENSIONS; FENCING; EMERGENCY CONNECTION AND ELECTRIC CONDUIT SIZING	DRT	8/22/2022

**GRAND STRAND WATER & SEWER AUTHORITY**

170 W. PALM BEACH BLVD. 1ST FLD.  
CONWAY, SC 29528-5988  
(843) 341-3400 FAX: (843) 341-3401  
E-MAIL: GSWSA@GSA.COM

**PUMP STATION DETAILS**

CONT. # / PROJ. #

SC DHEC CONSTR. PERMIT #

ISSUED:

DATE:

SCALE: NTS

FILENAME: PS-DETS.DGN

DESIGNED BY:

CHECKED BY: JASON POSTON

APPROVED BY:

CHRISTINA S. EVERETT PE #21255

SHEET OF