


From: Joe Rast jrast@ruby-collins.com 
Subject: HDD pipe submittal
Date: July 21, 2020 at 9:10 AM
To: Matthew Minor mattminor@gswsa.com



Hey Matt,

Attached is the submittal for the HDD pipe that shows the polyurethane lining. Sorry for the delay, I was sure I sent this way back in spring but apparently not.

Thanks,
Joe



Joe Rast
District Manager

Ruby-Collins, Inc.

Phone: 770-432-2900 | Mobile: 865-414-2756

4325 Dick Pond Road Suite D | Conway, South Carolina 29588

www.ruby-collins.com



RC1059-040
48x.75...DD.pdf

SUBMITTAL COVER

TO: GRAND STRAND WATER & SEWER AUTHORITY

166 Jackson Bluff Road
Conway South Carolina 29526
Phone: 843-443-8200

Copy To:

DDC ENGINEERS, INC.
1298 Professional Drive
Myrtle Beach South Carolina 29577
Phone: 843-692-3200

FROM: RUBY-COLLINS, INC.

4875 Martin Court, SE
Smyrna GA 30082
Phone: 770-432-2900

ATTENTION: MATT MINOR, PE

REFERENCE: HIGHWAY 701 TO HIGHWAY 544 48" WATER TRANSMISSION LINE IMPROVEMENT PROJECT

OWNER: GRAND STRAND WATER & SEWER AUTHORITY

SUPPLIER/MANUFACTURER: American Spiralweld Pipe Company LLC

SUBMITTAL NUMBER: RC1059-040

SUBMITTAL TITLE: 48x.75 Steel Pipe-Horizontal Directional Drill

SPECIFICATION SECTION: 330524

SUBMITTAL DATE: 7/21/2020

REMARKS:

CONTRACTOR'S STAMP

RUBY-COLLINS INC

- (X) APPROVED
() APPROVED, AS NOTED
() RESUBMIT, AS NOTED
() REJECTED

This shop drawing has been verified for compliance with information given in the Contract Documents, and field construction criteria. Approval does not relieve the manufacturer from responsibility for correctness of details and dimensions or for deviation from Contract Documents requirements.

By: **Joe Rast**

Date: 7/21/2020

ENGINEER'S STAMP

PROJECT: DDC P/N: **19113E** SHOP DWG. #: _____

- ☒ APPROVED ☐ FURNISH AS CORRECTED
☐ REJECTED ☐ REVISE AND RESUBMIT
☐ SUBMIT SPECIFIC ITEM

This review was performed only for general conformance with the design concept of the project and general compliance with the information given in the Contract Documents. Modifications or omissions made on the shop drawings during this review do not relieve contractor from compliance with the requirements of the plans and specifications. Approval of a specific item does not include approval of the assembly of which the item is a component. Contractor is responsible for dimensions to be confirmed and correlated at the jobsite, information that pertains solely to the fabrication processes or to the means, methods, techniques, sequences, and procedures of construction, coordination of the work of all trades; and for performing all work in a safe and satisfactory manner.

DDC ENGINEERS, INC.

Date: **7/27/20**

By: 



AMERICAN

SPIRALWELD PIPE

THE RIGHT WAY

ASWP TRANSMITTAL # 5

Date: 3/13/2020

To: Monte Beasley
Ruby-Collins, Inc.
4875 Martin Court
Smyrna, Georgia
(770)-432-2900

Project: US HWY. 701 To SC HWY. 544
48" Water Transmission Line

ASWP Project Number: ASC08990

From: John Traylor

Enclosed for your use:

Documents for Submittal	Rev.	Spec/DWG Reference
HDD Drawing Package	0	

If the documents above are not found as listed, please notify at once.

Please see the attached documents for approval. We request the approval of this transmittal by 3/27/2020.

Sincerely,

John Traylor

US HWY. 701 TO SC HWY. 544 48" WATER TRANSMISSION LINE

PROJECT

RUBY-COLLINS, INC.

CUSTOMER

GRAND STRAND WATER AND SEWER AUTHORITY

OWNER

ASC08990B

ASWP PROJECT NUMBER

DDC ENGINEERS, INC.

ENGINEER

PIPE SUMMARY

DESCRIPTION

LENGTH

49.750" x 0.750"

2500.00'

TOTAL

2500.00'

NO.	REVISION	DATE	BY	CHK	APP



AMERICAN
SpiralWeld Pipe Co., LLC
Birmingham, AL 35207

US HWY. 701 TO SC HWY. 544 48" WATER TRANSMISSION LINE			
DRAWN	WB	3/9/20	RUBY-COLLINS, INC.
CHECKED	JT		
APPVD	JS		ASC08990B-G10

GENERAL DRAWING INDEX

GENERAL DRAWINGS DWG#
 COVER SHEET ASC08990A-G10
 GENERAL DWG INDEX ASC08990A-G20
 MARK No DWG INDEX ASC08990A-G30
 SYMBOLS & ABBS ASC08990A-G40
 ACCESSORIES ASC08990A-G60

DETAIL DRAWINGS DWG#
 BUTTWELD ASC08990A-D1

NO.	REVISION	DATE	BY	CHK	APP



AMERICAN
 SpiralWeld Pipe Co., LLC
 Birmingham, AL 35207

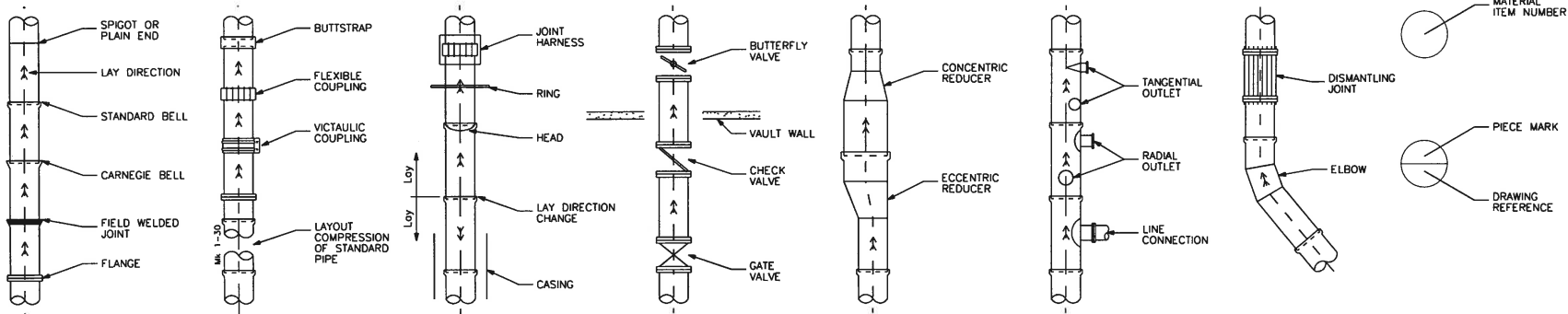
US HWY. 701 TO SC HWY. 544 48" WATER TRANSMISSION LINE			
DRAWN	WB	3/9/20	RUBY-COLLINS, INC.
CHECKED	JS		
APPVD			ASC08990A-G20

MARK & DRAWING NUMBER INDEX

MARK	DWG#	MARK	DWG#
1100	ASC08990B-S1	1128	ASC08990B-S1
1101	ASC08990B-S1	1129	ASC08990B-S1
1102	ASC08990B-S1	1130	ASC08990B-S1
1103	ASC08990B-S1	1131	ASC08990B-S1
1104	ASC08990B-S1	1132	ASC08990B-S1
1105	ASC08990B-S1	1133	ASC08990B-S1
1106	ASC08990B-S1	1134	ASC08990B-S1
1107	ASC08990B-S1	1135	ASC08990B-S1
1108	ASC08990B-S1	1136	ASC08990B-S1
1109	ASC08990B-S1	1137	ASC08990B-S1
1110	ASC08990B-S1	1138	ASC08990B-S1
1111	ASC08990B-S1	1139	ASC08990B-S1
1112	ASC08990B-S1	1140	ASC08990B-S1
1113	ASC08990B-S1	1141	ASC08990B-S1
1114	ASC08990B-S1	1142	ASC08990B-S1
1115	ASC08990B-S1	1143	ASC08990B-S1
1116	ASC08990B-S1	1144	ASC08990B-S1
1117	ASC08990B-S1	1145	ASC08990B-S1
1118	ASC08990B-S1	1146	ASC08990B-S1
1119	ASC08990B-S1	1147	ASC08990B-S1
1120	ASC08990B-S1	1148	ASC08990B-S1
1121	ASC08990B-S1	1149	ASC08990B-S1
1122	ASC08990B-S1		
1123	ASC08990B-S1		
1124	ASC08990B-S1		
1125	ASC08990B-S1		
1126	ASC08990B-S1		
1127	ASC08990B-S1		

								AMERICAN SpiralWeld Pipe Co., LLC Birmingham, AL 35207	US HWY. 701 TO SC HWY. 544 48" WATER TRANSMISSION LINE			
									DRAWN <u>WS</u>	3/9/20	RUBY-COLLINS, INC.	
									CHECKED <u>JT</u>			
NO.	REVISION	DATE	BY	CHK	APP				APPVD <u>[Signature]</u>		ASC08990B-G30	

SYMBOLS



ABBREVIATIONS

ARV - AIR RELEASE VALVE	BWRO - BUTTWELD - w/MITER & w/OUTSIDE BACKING BAR	FF - FLANGE CLASS F	OB - O-RING BELL	WB - LAP WELD BELL
ATH - AIR TEST HOLE	BWRI - BUTTWELD - w/INSIDE BACKING BAR	FF - FLANGE FLAT FACE	OD - OUTSIDE DIAMETER	WBA - LAP WELD BELL w/AIR
AV - AIR VENT	BWRO - BUTTWELD - w/OUTSIDE BACKING BAR	FLG - FLANGE	OL - OUTLET	WBB - BANDED BELL
AWSP - WELDED STEEL PIPE	C/L - CENTERLINE	FOL - FLANGED OUTLET	OS - O-RING SPIGOT	WBBA - BANDED BELL w/AIR
BEV - BEVEL	CB - COMBINED	FT - FIELD TOP	PC - PIECE	WBBM - BANDED BELL w/MITER
BF - BLIND FLANGE	CB - CARNEGIE BELL	FTG - FITTING	PE - PLAIN END	WSM - LAP WELD BELL w/MITER
BFV - BUTTERFLY VALVE	CONC - CONCENTRIC	FW - FIELD WELD	QTY - QUANTITY	WDB - DOUBLE WELD LAP BELL
BHC - BEGIN HORIZ CURVE	CPI - COMBINED POINT OF INTERSECT	GKT - GASKET	R - RADIUS	WDBB - DOUBLE WELD BANDED BELL
BI - BID ITEM	CPLG - COUPLING	GR - GRADE	REF - REFERENCE	WDBS - DOUBLE WELD LAP BELL w/SEAL
BK - BACK	CS - CARNEGIE SPIGOT	GRD - GRIND BACK	ROT - RADIAL OUTLET	WS - LAP WELD SPIGOT
BO - BLOW OFF	CSA - CARNEGIE SPIGOT w/AIR	Go - GAUGE	RT - RIGHT	WSA - LAP WELD SPIGOT w/AIR
BOP - BOTTOM OF PIPE	CTF - CUT TO FIT	HD - HEAD	S - SLOPE	WSP - FLARED LAP WELD SPIGOT
BS - BUTTSTRAP	CYL - CYLINDER	HORIZ - HORIZONTAL	SCH - SCHEDULE	WT - WEIGHT
BSA - BUTTSTRAP w/AIR	DEG - DEGREE	HPI - HORIZ POINT OF INTERSECT	SHT - SHEET	w/ - WITH
BSC - FLEX COUPLING	DIA - DIAMETER	ID - INSIDE DIAMETER	SPC - SPECIAL	w/o - WITHOUT
BVC - BEGIN VERT CURVE	DIM - DIMENSION	IN - INCHES	SS - STAINLESS STEEL	
BVI - BUTTWELD - BEVEL INSIDE	DN - DOWN	INV - INVERT	SS - SHORT SIDE	
BVIO - BUTTWELD - DOUBLE BEVEL	DWG - DRAWING	LEN - LENGTH	SSCE - SLEEVE COUPLING ExE	
BVIR - BUTTWELD - BEVEL INSIDE w/BACKING BAR	EA - EACH	LL - LAY LENGTH	SSCF - SLEEVE COUPLING FxF	
BVMI - BUTTWELD - BEVEL INSIDE w/MITER	ECC - ECCENTRIC	LOT - LATERAL OUTLET	STD - STANDARD	
BVMIO - BUTTWELD - DOUBLE BEVEL w/MITER	EHC - END HORIZ CURVE	LS - LUMP SUM	STL - STEEL	
BVMIR - BUTTWELD - BEVEL INSIDE w/MITER & w/BACKING BAR	ELEV - ELEVATION	LS - LONG SIDE	Sta - STATION	
BVMO - BUTTWELD - BEVEL OUTSIDE w/MITER	EQU - EQUATION	LT - LEFT	TAN - TANGENT	
BVMOR - BUTTWELD - BEVEL OUTSIDE w/MITER & w/BACKING BAR	EVC - END VERT CURVE	MAX - MAXIMUM	THK - THICKNESS	
BVO - BUTTWELD - BEVEL OUTSIDE	F150 - FLANGE CLASS 150	MH - MANHOLE	TOL - THREADED OUTLET	
BVOR - BUTTWELD - BEVEL OUTSIDE w/BACKING BAR	F300 - FLANGE CLASS 300	MIN - MINIMUM	TOT - TANGENTIAL OUTLET	
BW - BUTTWELD - SQUARE CUT END	FB - FLANGE CLASS B	MK - MARK	VERT - VERTICAL	
BWM - BUTTWELD - w/MITER	FD - FLANGE CLASS D	No - NUMBER	VICT - VICTAULIC	
BWMRI - BUTTWELD - w/MITER & w/INSIDE BACKING BAR	FE - FLANGE CLASS E	OAL - OVERALL LENGTH	VPI - VERT POINT OF INTERSECT	

NO.	REVISION	DATE	BY	CHK	APP



AMERICAN
SpiralWeld Pipe Co., LLC
Birmingham, AL 35207

US HWY. 701 TO SC HWY. 544 48" WATER TRANSMISSION LINE

DRAWN	WSP	3/9/20	RUBY-COLLINS, INC.
CHECKED			
APPVD			ASC08990B-G40

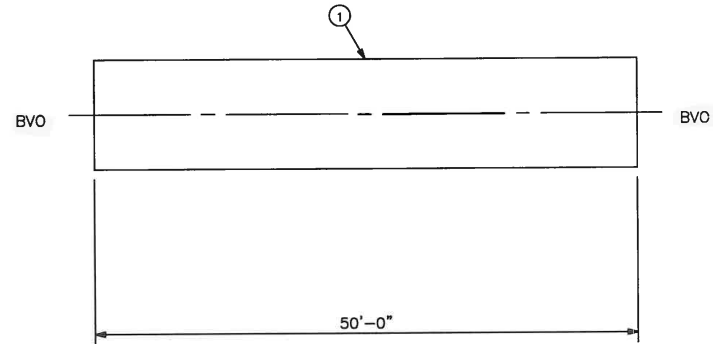
STANDARD PIPE

MARK	MARK
1100	1126
1101	1127
1102	1128
1103	1129
1104	1130
1105	1131
1106	1132
1107	1133
1108	1134
1109	1135
1110	1136
1111	1137
1112	1138
1113	1139
1114	1140
1115	1141
1116	1142
1117	1143
1118	1144
1119	1145
1120	1146
1121	1147
1122	1148
1123	1149
1124	
1125	

ITEM No	QTY	DESCRIPTION	REF SHEET
1	50	49.750" x 0.750" x 50'-0" SPIRAL PIPE	
	50	BVO END	D1-A
	50	BVO END	D1-A

BVO	FIN	GRD
INT	2.0	0.0
EXT	2.0	0.0

BVO	FIN	GRD
INT	2.0	0.0
EXT	2.0	0.0



Lining: C222 Polyurethane
 Coating: C222 Polyurethane/ARO
 Shipping: 50.00' x 4.15' x 4.15'
 Overall Length Tolerance: $\pm 2.0"$

NO.	REVISION	DATE	BY	CHK	APP



AMERICAN
 SpiralWeld Pipe Co., LLC
 Birmingham, AL 35207

US HWY. 701 TO SC HWY. 544 48" WATER TRANSMISSION LINE			
DRAWN	WAB	3/9/20	RUBY-COLLINS, INC.
CHECKED	JT		
APPVD	WAB		ASC08990B-S1

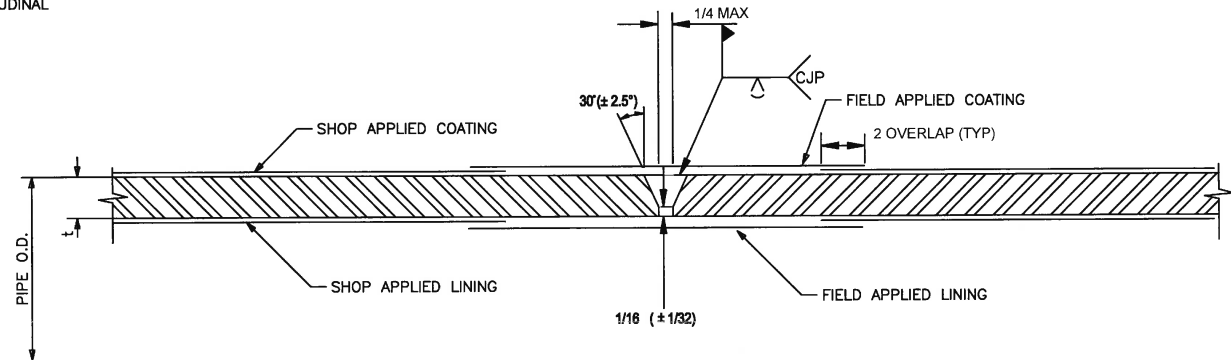
BUTTWELD

ROW	STEEL CYLINDER		DIMENSIONS	
	O.D. OF CYLINDER.	THICKNESS t		
D1-A	49.750	0.750		

NOTES:

1. ALL DIMENSIONS ARE IN INCHES.
2. SEE PROJECT PLANS AND SPECS FOR JOINT REPAIR DETAILS.
3. ROOT FACE MUST BE PERPENDICULAR TO THE LONGITUDINAL AXIS OF THE PIPE WITHIN $1/8"$.

LINING: AWWA C222 Polyurethane
COATING: AWWA C222 Polyurethane/ARO



NO.	REVISION	DATE	BY	CHK	APP



AMERICAN
SpiralWeld Pipe Co., LLC
Birmingham, AL 35207

US HWY. 701 TO SC HWY. 544 48" WATER TRANSMISSION LINE			
DRAWN	WJB	3/9/20	RUBY-COLLINS, INC.
CHECKED	JT		
APPROVED	WJB		ASC08990B-D1