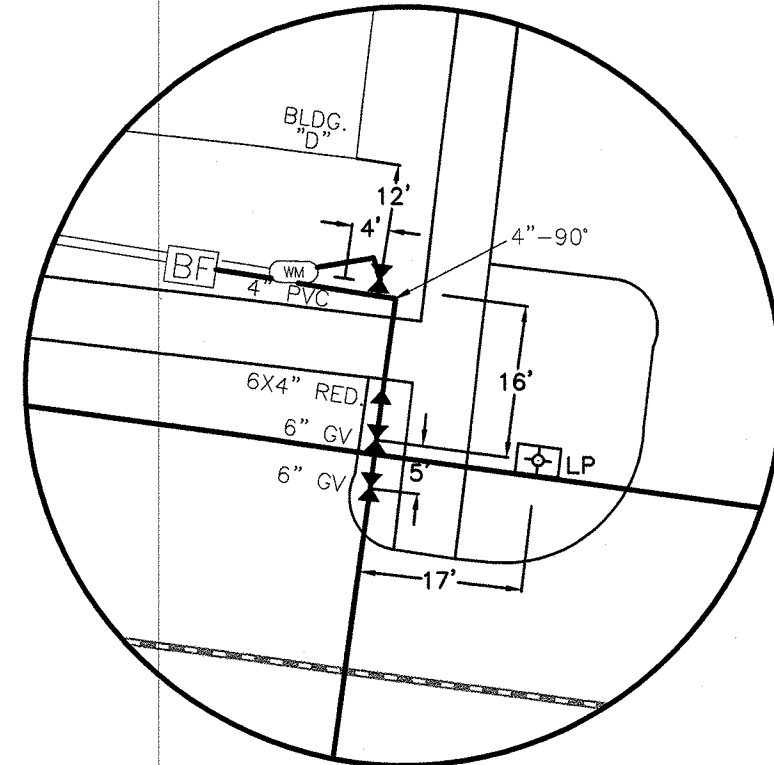
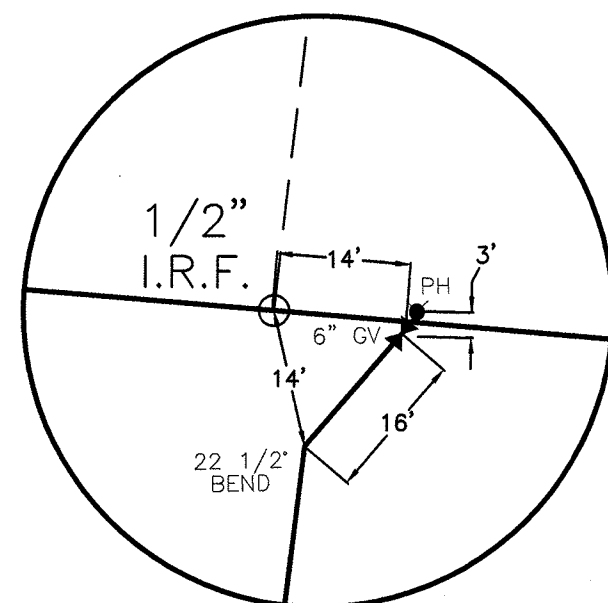


INSET "A" SCALE 1:20



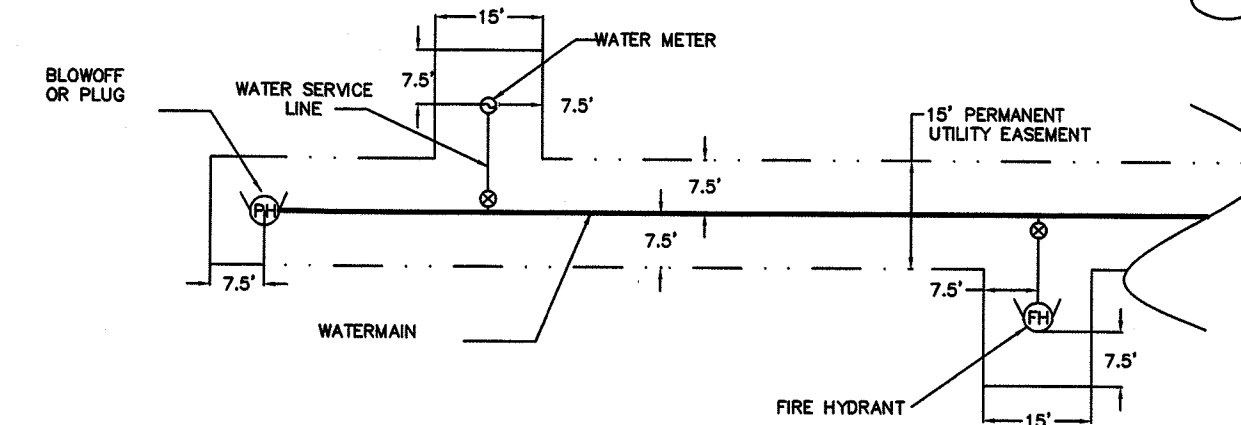
INSET "B" SCALE 1:20



INSET "C" SCALE 1:20

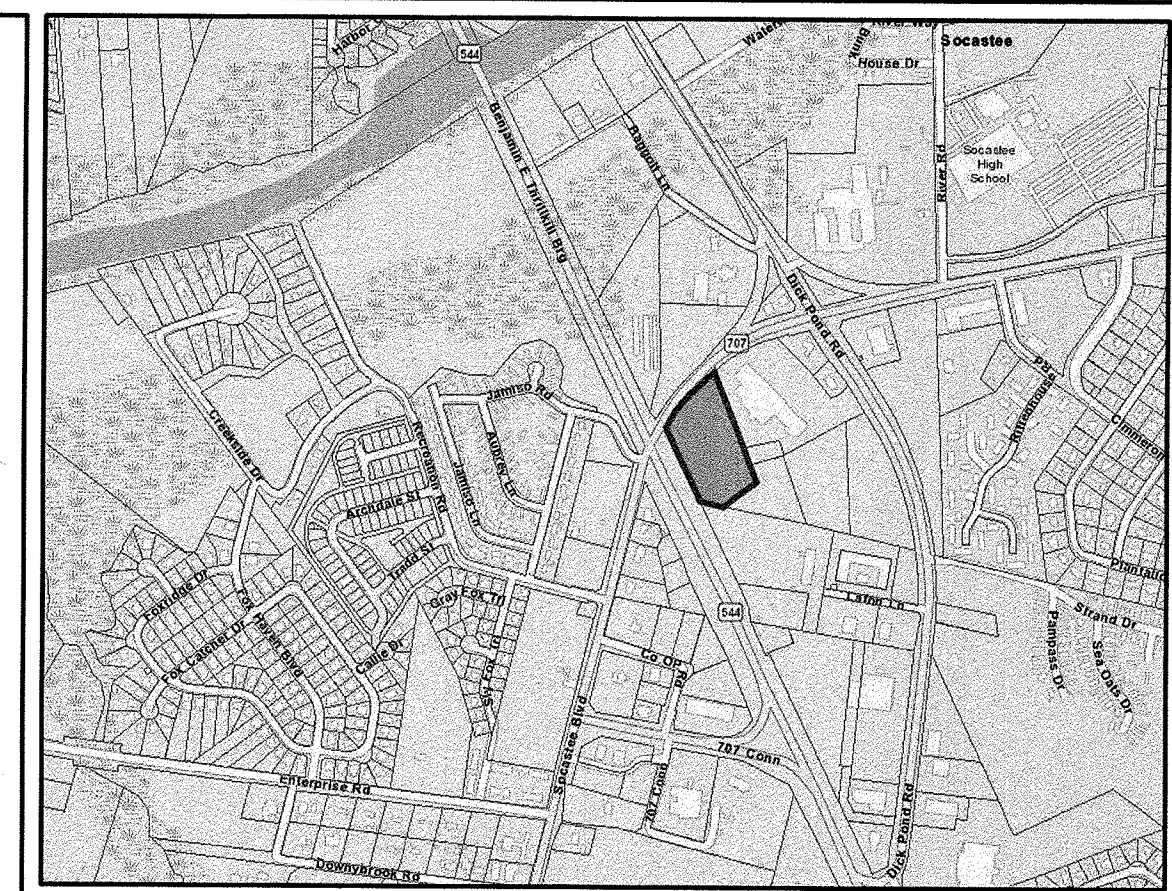
N/F  
MRZ BRAVES LLC  
TMS# 179-00-06-124  
DEED BOOK 2689, PAGE 1002

N/F  
LINDA WALL GRAHAM  
TMS# 179-00-06-128  
DEED BOOK 2323, PAGE 627



NOTE:  
ALL UTILITY EASEMENTS TO BE CONVEYED OVER WATERLINES AND  
WATER SERVICE LINES SHALL BE 15' IN WIDTH AND 7.5' BEYOND  
FIRE HYDRANT, WATER METER OR PLUG.

### TYPICAL GSWA WATER UTILITY EASEMENT FOR DEVELOPER PROJECTS

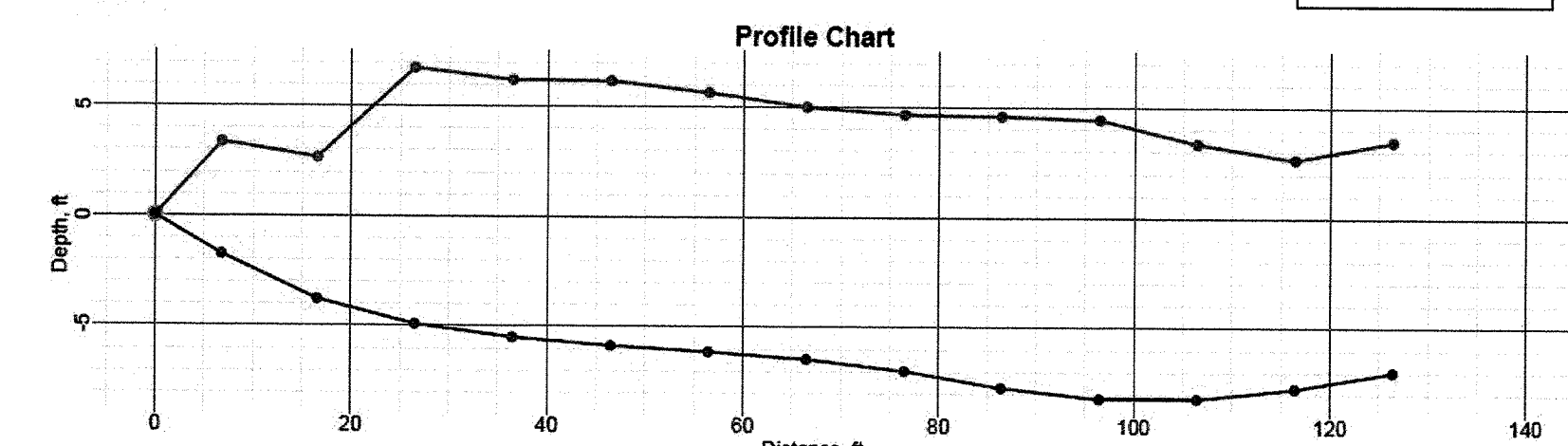


### VICINITY MAP

THIS PLAT WAS PREPARED FOR THE EXCLUSIVE USE OF THE  
PERSON OR PERSONS SHOWN IN THE TITLE BLOCK AND THIS  
DOESN'T MAKE ANY CERTIFICATION TO ANY UNNAMED PARTIES  
WITHOUT A REVISION AND UPDATE TO THE CERTIFICATION WITH THE  
CLIENTS AUTHORIZATION. ADDITIONAL FEES.

### DigiTrak LWD

#### Drill Data



Blue: Drill Path - Green: Calculated Terrain

**Drill Data Points**

FLP(Front Locate) - LL(Locate Line) - PO(Pitch Only) - BL(No Data) - o(override) - f(filled in) - i(interpolated)

Rod ID	Type	Rod Len.	Bore Len.	X Dist.	Pitch	Rel.Depth	Depth	Rel.Elev.
1	FLP	0.00	0.00	0.00	-28.0	0.00	0.00	0.00
2	FLP	7.00	7.00	6.78	-26.0	-1.76	5.12	3.38
3	FLP	10.00	17.00	16.57	-15.6	-3.79	6.45	2.68
4	FLP	10.00	27.00	26.50	-7.2	-4.62	11.66	6.75
5	FLP	10.00	37.00	36.49	-4.7	-5.51	11.72	6.22
6	FLP	10.00	47.00	46.48	-2.9	-5.89	12.05	6.17
7	FLP	10.00	57.00	56.48	-2.4	-6.15	11.80	5.64
8	FLP	10.00	67.00	66.47	-2.1	-6.46	11.48	5.06
9	FLP	10.00	77.00	76.46	-6.4	-7.01	11.68	4.87
10	FLP	10.00	87.00	86.43	-8.6	-7.75	12.36	4.81
11	FLP	10.00	97.00	96.42	-1.0	-8.23	12.69	4.45
12	FLP	10.00	107.00	106.42	1.0	-8.23	11.80	3.36
13	FLP	10.00	117.00	116.41	8.4	-7.77	10.41	2.64
14	FLP	10.00	127.00	126.38	6.8	-7.01	10.49	3.48

Page 2 of 2

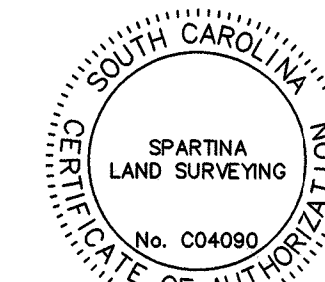
140' 10 inch with 6 inch carrier Assap

\*\*\* ALL WATER SERVICES 2" HDPE UNLESS OTHERWISE NOTED \*\*\*  
ALL METERS 1 1/2" UNLESS OTHERWISE NOTED

### SYMBOL TABLE

- = POWER POLE
- ⊕ = LIGHT POLE
- ⊞ = TRANSFORMER BOX
- ⊞ = TELEPHONE PED.
- ⊞ = WATER METER
- ⊞ = WATER VALVE
- ⊞ = FIRE HYD.
- ⊞ = POST HYD.
- ⊞ = CABLE TV
- ⊞ = SEWER MANHOLE
- ⊞ = SEWER CLEAN-OUT
- ⊞ = BACK FLOW

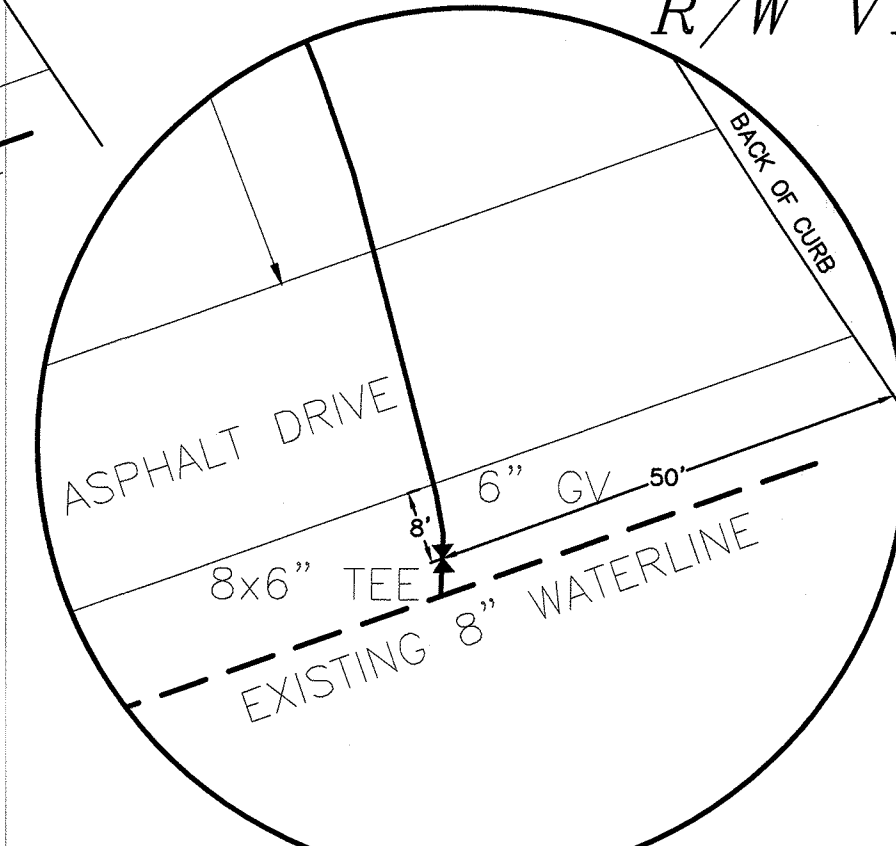
APPROVED DATE 4/27/18  
GRAND STRAND WATER & SEWER AUTHORITY  
BY: *Donald W. Henson*



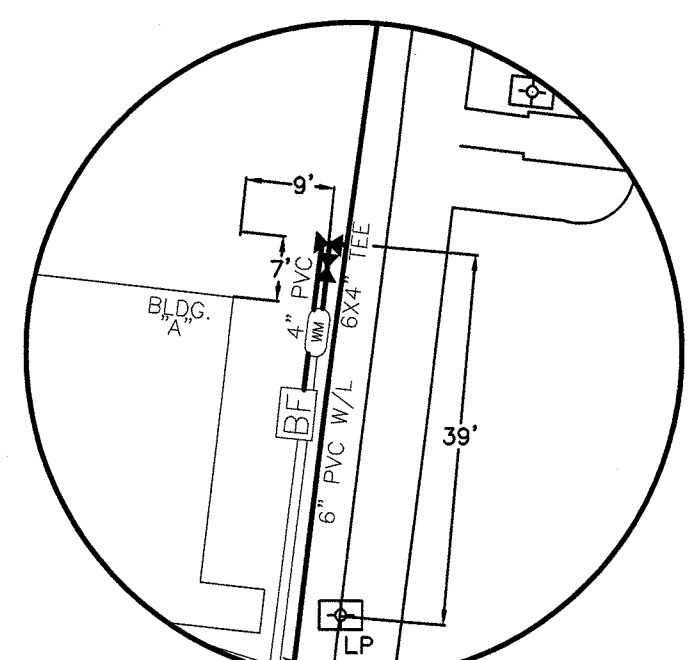
I HEREBY STATE THAT TO THE BEST OF MY KNOWLEDGE, INFORMATION, AND BELIEF, THE SURVEY SHOWN HEREON WAS MADE IN ACCORDANCE WITH THE REQUIREMENTS OF THE STANDARDS OF PRACTICE MANUAL FOR SURVEYING IN SOUTH CAROLINA, AND MEETS OR EXCEEDS THE REQUIREMENTS OF A CLASS B SURVEY AS SPECIFIED THEREIN. THIS PLAT SHOWS THE TRUE DIMENSIONS OF THE PROPERTY, THAT ALL NECESSARY MARKERS HAVE BEEN INSTALLED AND THERE ARE NO ENCROACHMENTS OTHER THAN SHOWN HEREON.

F. WILLIAM FAIRLEY IV, P.L.S. #27446

S.C. HWY 544  
R/W VARIES (PUBLIC)



INSET "H" SCALE 1:20



INSET "G" SCALE 1:20

INSET "D" SCALE 1:20

INSET "E" SCALE 1:20

INSET "F" SCALE 1:20

INSET "I" SCALE 1:20

INSET "J" SCALE 1:20

INSET "K" SCALE 1:20

INSET "L" SCALE 1:20

INSET "M" SCALE 1:20

INSET "N" SCALE 1:20

INSET "O" SCALE 1:20

INSET "P" SCALE 1:20

INSET "Q" SCALE 1:20

INSET "R" SCALE 1:20

INSET "S" SCALE 1:20

INSET "T" SCALE 1:20

INSET "U" SCALE 1:20

INSET "V" SCALE 1:20

INSET "W" SCALE 1:20

INSET "X" SCALE 1:20

INSET "Y" SCALE 1:20

INSET "Z" SCALE 1:20

INSET "AA" SCALE 1:20

INSET "AB" SCALE 1:20

INSET "AC" SCALE 1:20

INSET "AD" SCALE 1:20

INSET "AE" SCALE 1:20

INSET "AF" SCALE 1:20

INSET "AG" SCALE 1:20

INSET "AH" SCALE 1:20

INSET "AI" SCALE 1:20

INSET "AJ" SCALE 1:20

INSET "AK" SCALE 1:20

INSET "AL" SCALE 1:20

INSET "AM" SCALE 1:20

INSET "AN" SCALE 1:20

INSET "AO" SCALE 1:20

INSET "AP" SCALE 1:20

INSET "AQ" SCALE 1:20

INSET "AR" SCALE 1:20

INSET "AS" SCALE 1:20

INSET "AT" SCALE 1:20

INSET "AU" SCALE 1:20

INSET "AV" SCALE 1:20

INSET "AW" SCALE 1:20

INSET "AX" SCALE 1:20

INSET "AY" SCALE 1:20

INSET "AZ" SCALE 1:20

INSET "BA" SCALE 1:20

INSET "BB" SCALE 1:20

INSET "BC" SCALE 1:20

INSET "BD" SCALE 1:20

INSET "BE" SCALE 1:20

INSET "BF" SCALE 1:20

INSET "BG" SCALE 1:20

INSET "BH" SCALE 1:20

INSET "BI" SCALE 1:20

INSET "BJ" SCALE 1:20

INSET "BK" SCALE 1:20

INSET "BL" SCALE 1:20

INSET "BM" SCALE 1:20

INSET "BN" SCALE 1:20

INSET "BO" SCALE 1:20

INSET "BP" SCALE 1:20

INSET "BQ" SCALE 1:20

INSET "BR" SCALE 1:20

INSET "BS" SCALE 1:20

INSET "BT" SCALE 1:20

INSET "BU" SCALE 1:20

INSET "BV" SCALE 1:20

INSET "BW" SCALE 1:20

INSET "BX" SCALE 1:20

INSET "BY" SCALE 1:20

INSET "BZ" SCALE 1:20

INSET "CA" SCALE 1:20

INSET "CB" SCALE 1:20

INSET "CC" SCALE 1:20

INSET "CD" SCALE 1:20

INSET "CE" SCALE 1:20

INSET "CF" SCALE 1:20

INSET "CG" SCALE 1:20

INSET "CH" SCALE 1:20

INSET "CI" SCALE 1:20

INSET "CJ" SCALE 1:20

INSET "CK" SCALE 1:20

INSET "CL" SCALE 1:20

INSET "CM" SCALE 1:20

INSET "CN" SCALE 1:20

INSET "CO" SCALE 1:20

INSET "CP" SCALE 1:20

INSET "CQ" SCALE 1:20

INSET "CR" SCALE 1:20

INSET "CS" SCALE 1:20

INSET "CT" SCALE 1:20

INSET "CU" SCALE 1:20

INSET "CV" SCALE 1:20

INSET "CW" SCALE 1:20

INSET "CX" SCALE 1:20

INSET "CY" SCALE 1:20

INSET "CZ" SCALE 1:20

INSET "DA" SCALE 1:20

INSET "DB" SCALE 1:20

INSET "DC" SCALE 1:20

INSET "DD" SCALE 1:20

INSET "DE" SCALE 1:20

INSET "DF" SCALE 1:20

INSET "DG" SCALE 1:20

INSET "DH" SCALE 1:20

INSET "DI" SCALE 1:20

INSET "DJ" SCALE 1:20

INSET "DK" SCALE 1:20

INSET "DL" SCALE 1:20

INSET "DM" SCALE 1:20

INSET "DN" SCALE 1:20

INSET "DO" SCALE 1:20

INSET "DP" SCALE 1:20

INSET "DQ" SCALE 1:20

INSET "DR" SCALE 1:20

INSET "DS" SCALE 1:20

INSET "DT" SCALE 1:20

INSET "DU" SCALE 1:20

INSET "DV" SCALE 1:20

INSET "DW" SCALE 1:20

INSET "DX" SCALE 1:20

INSET "DY" SCALE 1:20

INSET "DZ" SCALE 1:20

INSET "EA" SCALE 1:20

INSET "EB" SCALE 1:20

INSET "EC" SCALE 1:20

INSET "ED" SCALE 1:20

INSET "EE" SCALE 1:20

INSET "EF" SCALE 1:20

INSET "EG" SCALE 1:20

INSET "EH" SCALE 1:20

INSET "EI" SCALE 1:20

INSET "EJ" SCALE 1:20

INSET "EK" SCALE 1:20

INSET "EL" SCALE 1:20

INSET "EM" SCALE 1:20

INSET "EN" SCALE 1:20

INSET "EO" SCALE 1:20

INSET "EP" SCALE 1:20

INSET "EQ" SCALE 1:20

INSET "ER" SCALE 1:20

INSET "ES" SCALE 1:20

INSET "ET" SCALE 1:20

INSET "EU" SCALE 1:20

INSET "EV" SCALE 1:20

INSET "EW" SCALE 1:20

INSET "EX" SCALE 1:20

INSET "EY" SCALE 1:20

INSET "EZ" SCALE 1:20

INSET "FA" SCALE 1:20

INSET "FB" SCALE 1:20

INSET "FC" SCALE 1:20

INSET "FD" SCALE 1:20

INSET "FE" SCALE 1:20

INSET "FF" SCALE 1:20

INSET "FG" SCALE 1:20

INSET "FH" SCALE 1:20

INSET "FI" SCALE 1:20

INSET "FJ" SCALE 1:20

INSET "FK" SCALE 1:20

INSET "FL" SCALE 1:20

INSET "FM" SCALE 1:20

INSET "FN" SCALE 1:20

INSET "FO" SCALE 1:20

INSET "FP" SCALE 1:20

INSET "FQ" SCALE 1:20

INSET "FR" SCALE 1:20

INSET "FS" SCALE 1:20

INSET "FT" SCALE 1:20

INSET "FU" SCALE 1:20

INSET "FV" SCALE 1:20

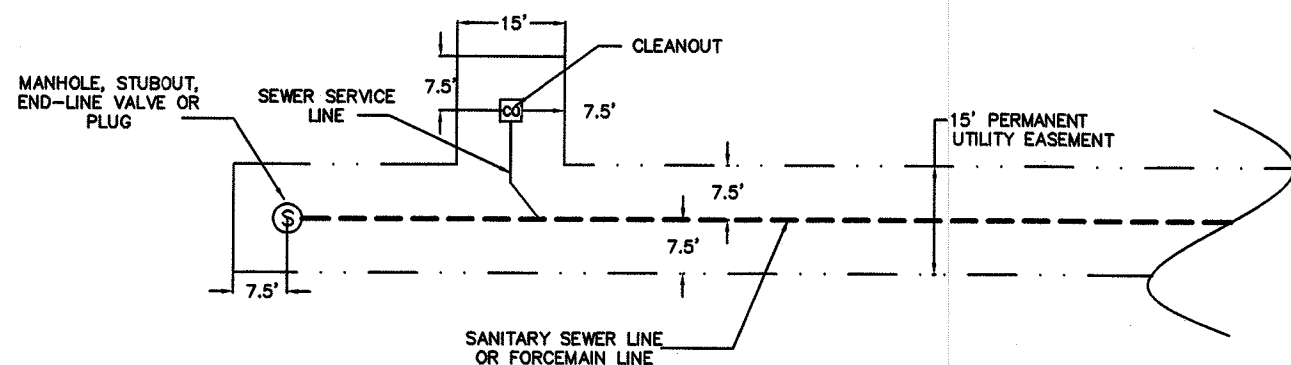
INSET "FW" SCALE 1:20

INSET "FX" SCALE 1:20

INSET "FY" SCALE 1:20

INSET "FZ" SCALE 1:20



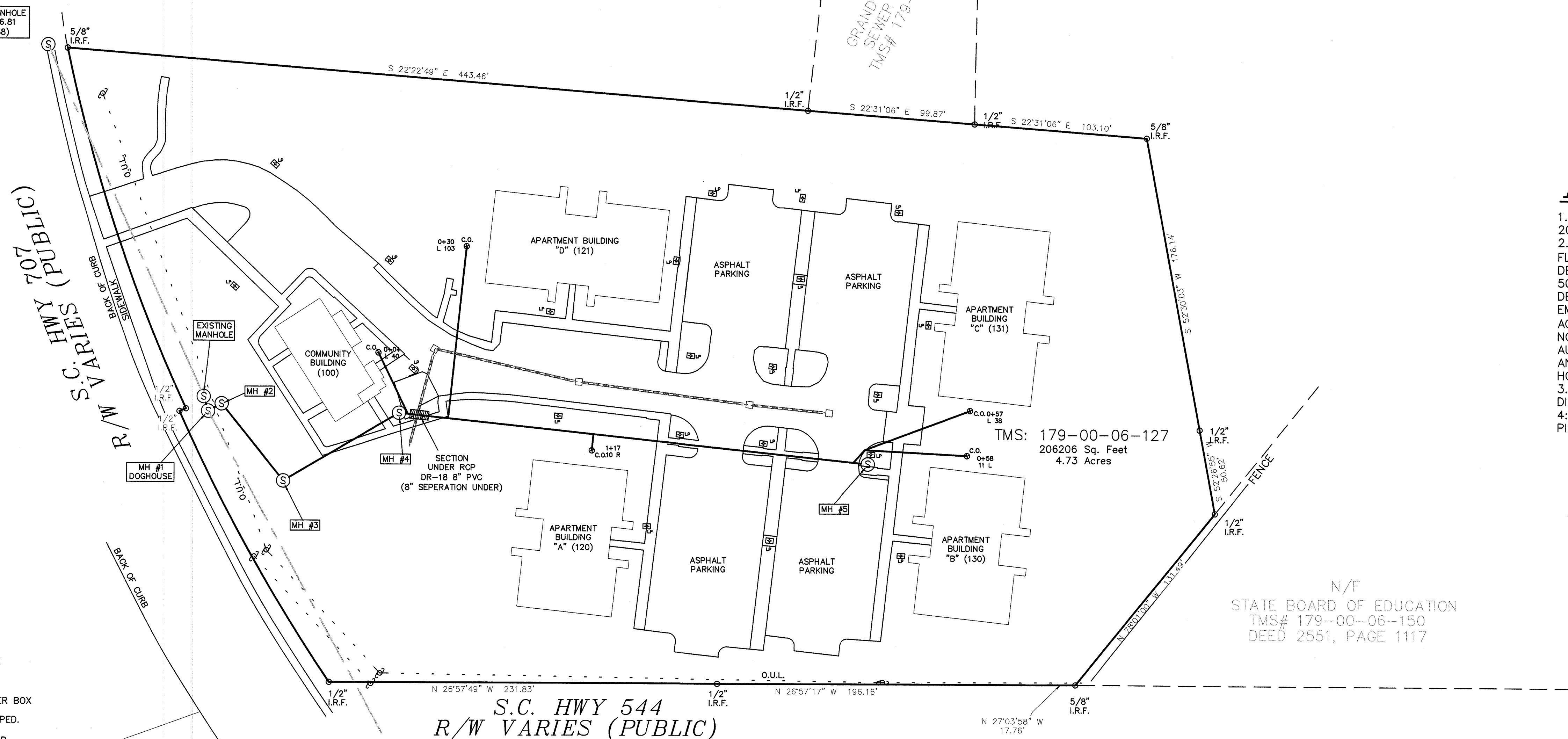


NOTE:  
ALL UTILITY EASEMENTS TO BE CONVEYED OVER  
SEWER LINES AND SEWER SERVICE LINES SHALL BE  
MINIMUM 15' IN WIDTH AND 7.5' BEYOND MANHOLE  
STUBOUT, PLUS OR CLEANOUT. THE WIDTH OF THE  
EASEMENT SHALL BE BASED ON A 1:1 SLOPE AS  
MEASURED FROM THE BOTTOM OF THE PIPE IN 5'  
INCREMENTS (SEE CHART)

UTILITY DEPTH - EASEMENT WIDTH
0' - 7.5' ----- 15'
7.5' - 10' ----- 20'
10.1' - 12.5' ----- 25'
12.5' - 15' ----- 30'
15.1' - 17.5' ----- 35'
17.5' - 20' ----- 40'

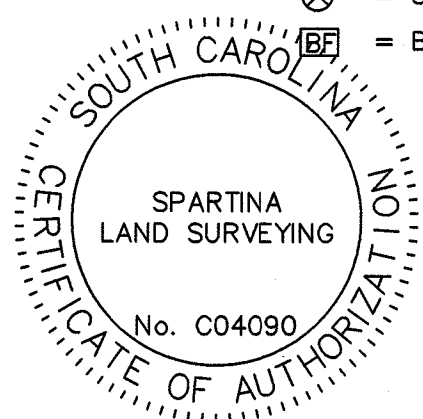
### TYPICAL GSWA SEWER UTILITY EASEMENT FOR DEVELOPER PROJECTS

EXISTING MANHOLE  
ELEV = 16.81  
(NAVD 88)



#### SYMBOL TABLE

- = POWER POLE
- = LIGHT POLE
- = TRANSFORMER BOX
- = TELEPHONE PED.
- = WATER METER
- = WATER VALVE
- = FIRE HYD.
- = POST HYD.
- = CABLE TV
- = SEWER MANHOLE
- = SEWER CLEAN-OUT
- = BACK FLOW



APPROVED DATE 4/27/18  
GRAND STRAND WATER & SEWER AUTHORITY  
BY: *William Fairley IV*

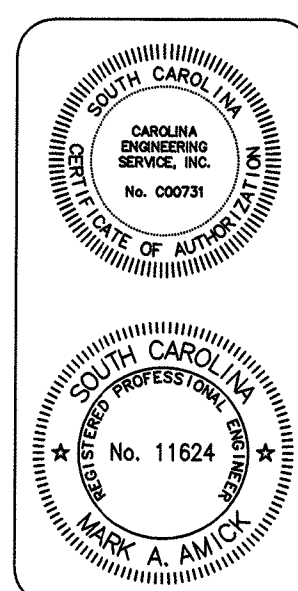
I HEREBY STATE THAT TO THE BEST OF MY KNOWLEDGE, INFORMATION, AND BELIEF,  
THE SURVEY SHOWN HEREON WAS MADE IN ACCORDANCE WITH THE REQUIREMENTS OF  
THE STANDARDS OF PRACTICE MANUAL FOR SURVEYING IN SOUTH CAROLINA,  
AND MEETS OR EXCEEDS THE REQUIREMENTS OF A CLASS B SURVEY AS  
SPECIFIED THEREIN. THIS PLAT SHOWS THE TRUE DIMENSIONS OF THE PROPERTY,  
THAT ALL NECESSARY MARKERS HAVE BEEN INSTALLED AND THERE ARE NO  
ENCROACHMENTS OTHER THAN SHOWN HEREON.

F. WILLIAM FAIRLEY IV, P.L.S. #27446

S.C. HWY 544  
R/W VARIES (PUBLIC)

FROM MANHOLE	RIM ELEVATION	INVERT OUT ELEVATION	TO MANHOLE	INVERT IN ELEVATION
MH 5	18.66	13.41	MH 4	11.94
MH 4	18.32	11.84	MH 3	11.57
MH 3	18.07	11.47	MH 2	11.24
MH 2	17.69	11.14	MH 1	11.04
MH 1	17.10	10.94	EXISTING MH	10.97
EXISTING MH	68.56	10.87		
MH 7	69.48			
MH 8	68.26	63.71	MH 6	63.48

ALL SEWER SERVICES ARE 6" SDR 35 PVC (PER PLANS)



#### CERTIFICATION OF THE COMPLETED IMPROVEMENTS

I HEREBY CERTIFY THAT THE SEWER UTILITIES AS SHOWN HAVE BEEN INSTALLED IN ACCORDANCE WITH THE APPROVED  
CONSTRUCTION DRAWINGS AND SPECIFICATIONS AND ARE, TO THE BEST OF MY KNOWLEDGE, AS SHOWN ON THESE PLANS.

DATE 4-25-2018

ENGINEER'S SIGNATURE

*Mark Amick*

S.C. REGISTRATION NO.

11624

N/F  
STATE BOARD OF EDUCATION  
TMS# 179-00-06-150  
DEED 2551, PAGE 1117

DEVELOPER  
QUAD STATE  
841 SWEETWATER AVE.  
FLORENCE, AL 35630  
(256)-760-9624

ENGINEER OF RECORD  
CAROLINA ENGINEERING  
SERVICES INC.  
MARK AMICK  
428 GRACE STREET  
GREENWOOD, SC 29649  
(864)-229-6256

UTILITY CONTRACTOR  
ASSAP  
5169 CATESBAY HWY,  
CONWAY, SC 29527  
(843)-397-5701

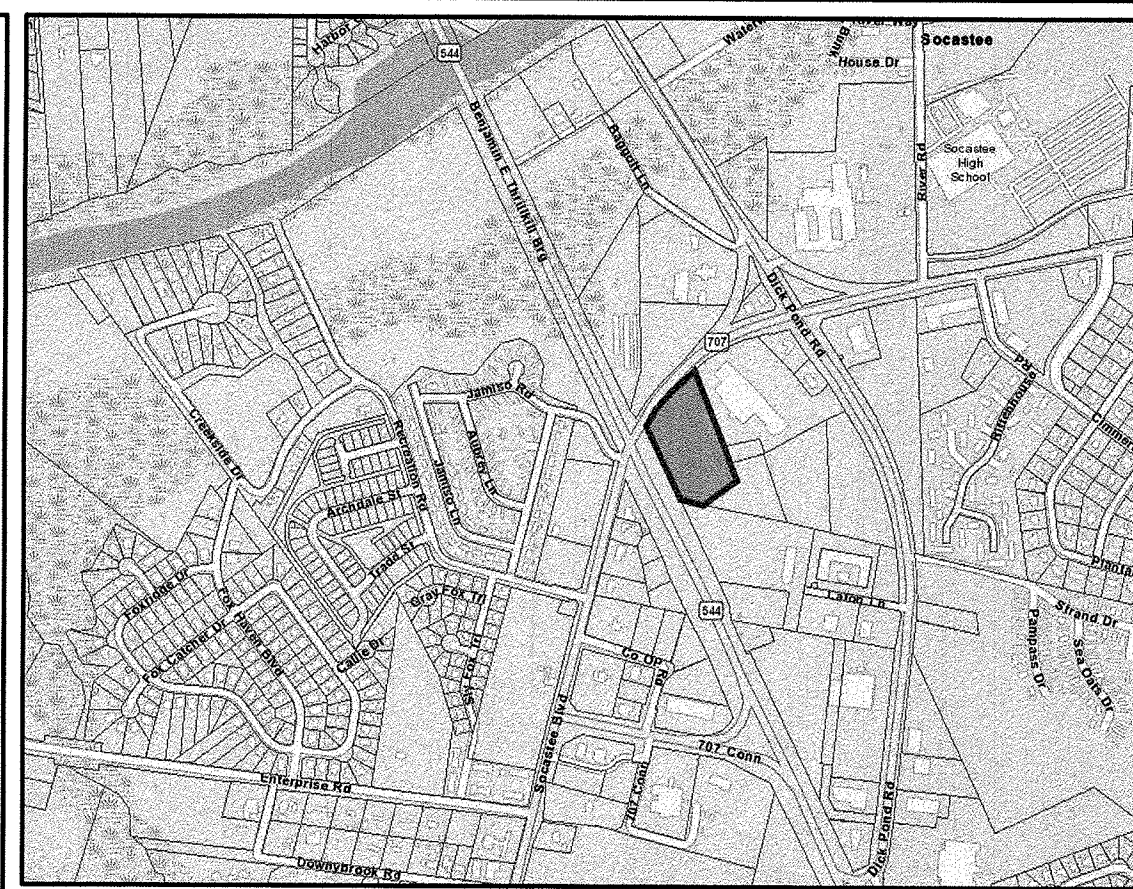
REVISED APRIL 11, 2018 PER GSWA COMMENTS

### SEWER AS-BUILT OF

TMS: 179-00-06-127  
THE HIGHLANDS AT SOCASTEE  
LOCATED IN SOCASTEE TOWNSHIP  
HORRY COUNTY, SOUTH CAROLINA  
PREPARED FOR  
**THE HIGHLANDS AT  
SOCASTEE, LLC**  
MARCH 11, 2018

SURVEYED AND MAPPED BY  
SPARTINA LAND SURVEYING  
602 MAIN STREET, CONWAY, SC 29526  
PHONE 843-340-0285 / OFFICE 843-488-1040

SDP SOCASTEE WATER SEWER-ASB-LATEST.DWG JOB# 1792-TRUSTMARK



#### VICINITY MAP

THIS PLAT WAS PREPARED FOR THE EXCLUSIVE USE OF THE  
PERSON OR PERSONS SHOWN IN THE TITLE BLOCK AND THIS  
DOESN'T MAKE ANY CERTIFICATION TO ANY UNNAMED PARTIES  
WITHOUT A REVISION AND UPDATE TO THE CERTIFICATION WITH THE  
CLIENT'S AUTHORIZATION. ADDITIONAL FEES.

### NOTES:

- DATE OF FIELD WORK: MARCH 2018
- LOT APPEARS TO LOCATED IN FLOOD ZONE "X" DEFINED AS AREAS DETERMINED TO BE INSIDE THE 500-YEAR FLOODPLAIN, AS DETERMINED BY THE FEDERAL EMERGENCY MANAGEMENT AGENCY(FEMA). COMMUNITY PANEL NO. 45051C0 670 H, DATED AUGUST 23, 1999. AND IS SUBJECT TO VERIFICATION BY HORRY THE COUNTY FEMO OFFICER.
- SUBJECT TO ANY TITLE REPORT DISCLOSURE-NOT SUPPLIED.
- TMS: 179-00-06-127  
PIN: 440-10-03-0004

### REFERENCE:

AN ALTA SURVEY, BY THE BRIGMAN COMPANY, PREPARED FOR THE HIGHLANDS AT SOCASTEE DATED OCTOBER 20, 2016.

DEED BOOK: 3961 PAGE: 702

14-470-02/002 WLS