

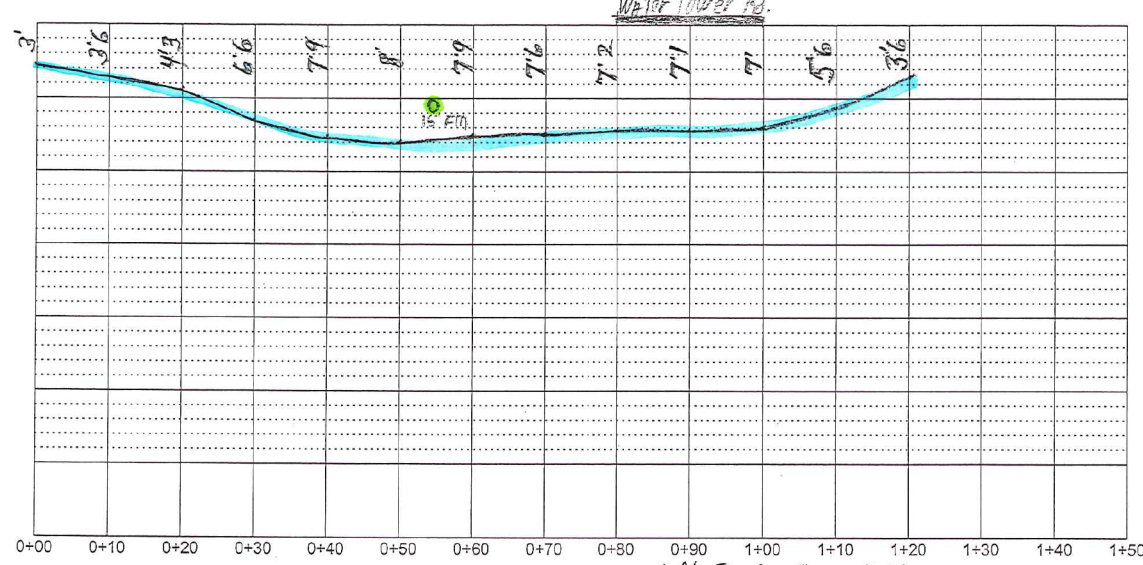
PROJECT LOCATION

WATER TOWER ROAD

LOCATION MAP

North Booster Station ASR
Proj # 609-01 / WDMA 889812
120 LF 6" HDPE Blue
Across Water Tower Rd.
Installed - 11-5-15

BORE PLAN VIEW
N.T.S.



BORE PROFILE VIEW
N.T.S.

North Booster Station ASR
Proj # 609-01 / WDMA 889812
120 LF 6" HDPE Blue
Across Water Tower Rd.
Installed - 11-5-15

LEGEND (APPLIES TYPICALLY THROUGHOUT PLAN SHEETS)

DIRT/GRASS DRIVEWAY	WATER OR SEWER AIR RELEASE VALVE
COQUINA/GRAVEL DRIVEWAY	SEWER FM PUMPER CONNECTION ASSEMBLY
CONCRETE DRIVEWAY	SEWER FM PLUG VALVE
ASPHALT DRIVEWAY	SEWER MANHOLE
REINFORCED CONCRETE PIPE (RCP)	SEWER LIFT STATION
TELEPHONE PEDESTAL	SEWER ST.E.P. TANK
T.V. CABLE PEDESTAL	SEWER GRINDER PUMP STATION
ELECTRIC POWER POLE	WATER FIRE HYDRANT
U.G. ELECTRIC TRANSFORMER	WATER POST HYDRANT
GAS MAIN	WATER BLOW-OFF ASSY
TELEPHONE/TV CABLE	WATER GATE VALVE
FIBER OPTIC CABLE	WATER/SEWER REDUCER
CATCH BASIN	WATER SERVICE METER
WATER WELL HOUSE	CUSTOMER TO RECEIVE WATER AND/OR SEWER SERVICE

Permit Information:
General Water Permit #: 111009

Water installed by:
GSWSA (Isaac Gore)

Directional bores installed by:
GSWSA (Tim Hucks)

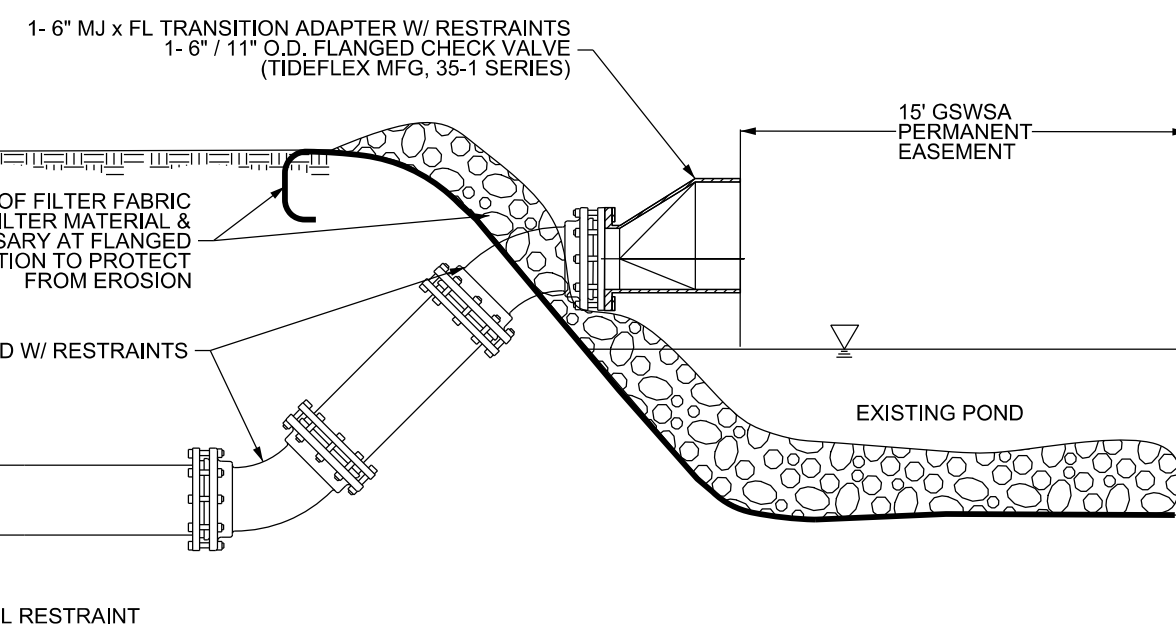
AS-BUILT MEASUREMENTS
INDICATED BY
20'

THESE DRAWINGS REFLECT
AS-BUILT
CONDITIONS

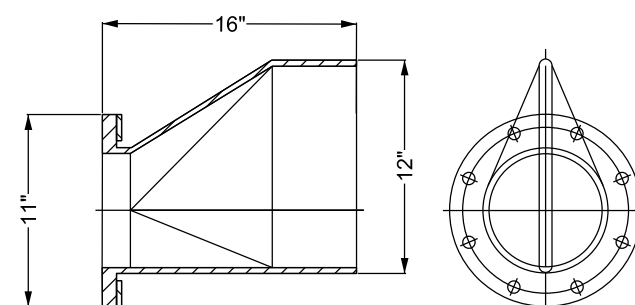
REVIEWED BY: Mark Dawsey 11-30-15
INSPECTIONS DATE

REVIEWED BY: 12/22/15
ENGINEERING DATE

GRAND STRAND WATER AND SEWER AUTHORITY



(X-SECTION A-A)



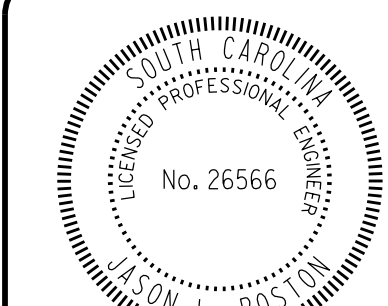
TYPICAL FLANGED CHECK VALVE
(TIDEFLEX MFG. 35-1 SERIES)
N.T.S.

GRAND STRAND
WATER & SEWER
AUTHORITY
166 JACKSON BLUFF RD.
CONWAY, SC 29928-2368
(843) 443-8200 OR 347-4641
(843) 347-4680 (FAX)
EMAIL: GSWSA@GSA.COM

NORTH BOOSTER STATION
ASR WELL BLOW OFF

WO # 889812 / PROJ. # 609-01

LOCATED ON WATER TOWER ROAD AT THE HWY 22 OVERPASS



DATE: SEPTEMBER 2015
SCALE: as shown
FILENAME: _Base.dgn
DESIGNED BY: Trapper Myers
CHECKED BY: Jason L. Poston
APPROVED BY:

JASON L. POSTON, PE #26566

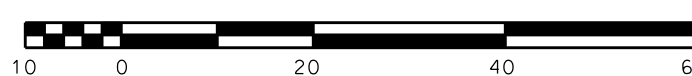
SHEET

1

OF 1

NORTH BOOSTER STATION
ASR WELL BLOW OFF

SCALE: 1" = 20'



28-033-001-W