

# MYRTLE BEACH WWTP BYPASS PUMP STATION

HORRY COUNTY, SOUTH CAROLINA



RECORD DRAWING

OCTOBER 2012

THIS RECORD DRAWING HAS BEEN PREPARED IN PART BASED UPON INFORMATION FURNISHED BY OTHERS. WHILE THIS INFORMATION IS BELIEVED TO BE RELIABLE, THE DESIGN PROFESSIONAL CANNOT ASSURE ITS ACCURACY AND THUS IS NOT RESPONSIBLE FOR THE ACCURACY OF THIS RECORD DRAWING OR FOR ANY ERRORS OR OMISSIONS WHICH MAY HAVE BEEN INCORPORATED INTO IT AS A RESULT. THOSE RELYING ON THIS RECORD DOCUMENT ARE ADVISED TO OBTAIN INDEPENDENT VERIFICATION OF ITS ACCURACY BEFORE RELYING ON IT FOR ANY PURPOSE.

Version: 2



**MARZIANO & MCGOUGAN, P.A.**  
consulting engineers

1300 SECOND AVENUE • SUITE 211 • CONWAY, SC 29526  
Phone: 843.488.0124 Fax: 843.488.0129

OCTOBER 2012

JOB NO. 31007

11x17 DWGS. ARE  
TRUE HALF SCALE

AS-BUILT



LOCATION MAP  
N.T.S.



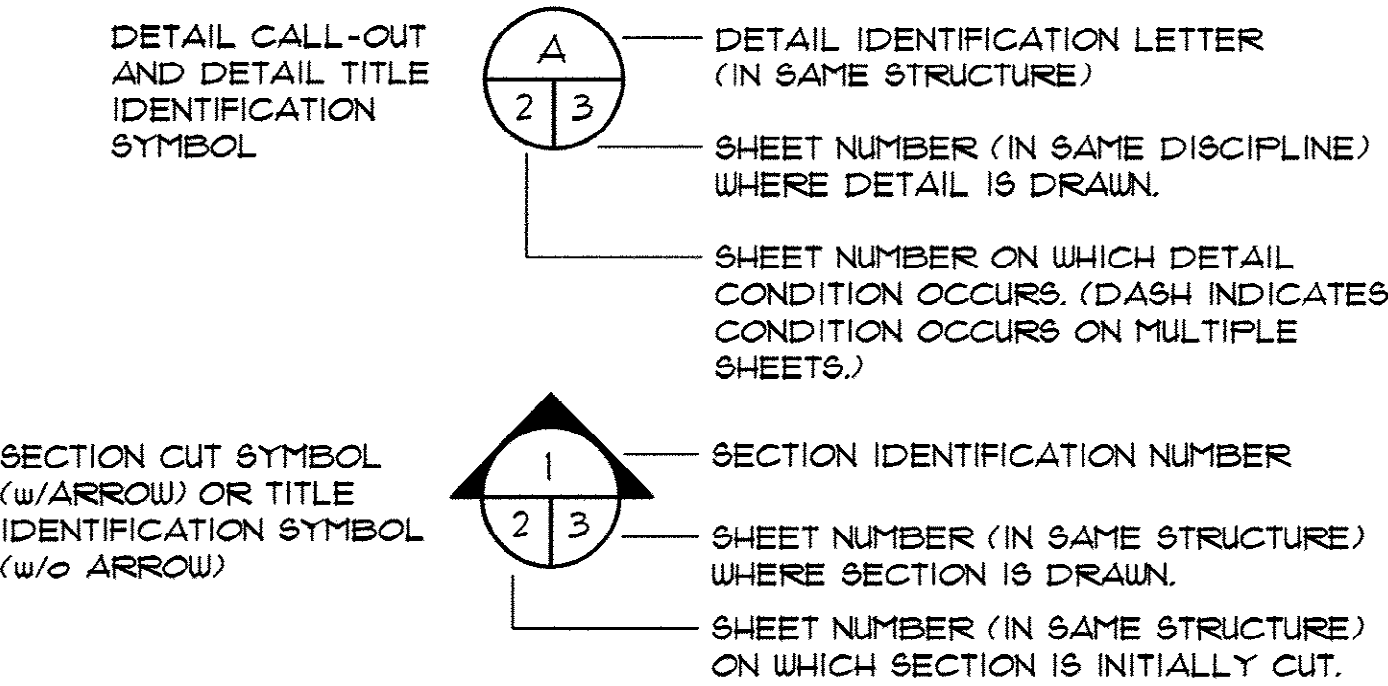
51-013-001/4



GENERAL CONSTRUCTION ABBREVIATIONS

#	NUMBER OR POUND	INFL	INFLUENT
Ø	DIAMETER	INS.	INSIDE
&	AND	INV.	INVERT
<	LESS THAN	JT.	JOINT
<=	LESS THAN OR EQUAL TO	JTS	JOINTS
>	GREATER THAN	L.L.O.	LONG LEG OUT
@	AT	LB	POUND
A.B.	ANCHOR BOLT	LG	LONG
AFF.	ABOVE FINISHED FLOOR	L.P.	LOW POINT
ADDL.	ADDITIONAL	M.J.	MECHANICAL JOINT
ALUM.	ALUMINUM OR ALUM.	MATL.	MATERIAL
APPROX.	APPROXIMATE(LY)	MAS	MASONRY
ARCH.	ARCHITECTURAL	MAX	MAXIMUM
BM.	BENCH MARK OR BEAM	MECH	MECHANICAL
BOTT.	BOTTOM	MFR	MANUFACTURER
B.W.	BLOCK WALL	MH	MANHOLE
C.I.	CAST IRON	MIN	MINIMUM
C/C	CENTER TO CENTER	MNTG	MOUNTING
CAP.	CAPACITY	NP.W.	NONPOTABLE WATER
CIRCUM.	CIRCUMFERENCE	N.T.S.	NOT TO SCALE
CL	CLAY	NO.	NUMBER
CLR.	CLEARANCE	O.C.	ON CENTER
CL2	CENTERLINE	O/O	OUTSIDE TO OUTSIDE
CL2	CHLORINE	OPNG	OPENING
CLARIF.	CLARIFIER	OX	OXIDATION
CHEM.	CHEMICAL	P.E.	PLAIN END
COL.	COLUMN	PED	PEDESTAL
CONC.	CONCRETE	PL	PLATE
CONST.	CONSTRUCTION	PLCS.	PLACES
CONT.	CONTINUOUS	PROJ	PROJECTION
CONTR.	CONTRACTOR	P.S.	PUMP STATION
CU	COPPER	P.V.C.	POLYVINYL CHLORIDE
C.W.	CONCRETE WALL	R.C.P.	REINFORCED CONCRETE PIPE
D	DIAMETER	RAD.	RADIUS
DIA	DIAMETER	RAS	RETURN ACTIVATED SLUDGE
D.I.P.	DUCTILE IRON PIPE	RED	REDUCER
DISCH.	DISCHARGE	REF	REFERENCE
DP	DEEP	REINF	REINFORCING OR REINFORCED
DWLS.	DOWELS	REQ'D	REQUIRED
E.F.	EACH FACE	S.S.	STAINLESS STEEL
E.J.	EXPANSION JOINT	SCH.	SCHEDULE
EA	EACH	SHT	SHEET
EFF.	EFFLUENT	SIM	SIMILAR
EL	ELEVATION	SO2	SULFUR DIOXIDE
ELEV	ELEVATION	SFA	SPACES
EQ	EQUAL	SQ.	SQUARE
EQUIP.	EQUIPMENT	STD.	STANDARD
EXIST.	EXISTING	STL	STEEL
EXP.	EXPANSION	STN	STAINLESS
F.E.S.	FLARED END SECTION	S.W.	SLAB WIDTH
F.R.P.	FIBERGLASS	S.W.D.	SIDE WALL DEPTH
	REINFORCED PLASTIC	T/	TOP OF
FIG	FIGURE	TCJ/CJ	TYP. CONTROL JOINT, CONSTRUCTION JOINT
FIN	FINISHED		
FL.	FLANGE	THRD	THREAD(SXED)
FLR	FLOOR	TRICK	TRICKLING
FTG	FOOTING	TYP	TYPICAL
GALV	GALVANIZED	U.O.N.	UNLESS OTHERWISE NOTED
HDWE	HARDWARE	VERT	VERTICAL
HK	HOOK	W.W.F.	WELDED WIRE FABRIC
HORIZ.	HORIZONTAL	W/	WITH
H.P.	HIGH POINT	W/O	WITHOUT
HYD	HYDRANT	WAS	WASTE ACTIVATED SLUDGE
I.D.	INSIDE DIAMETER	W/L	WATER LEVEL
O.D.	OUTSIDE DIAMETER		

SECTION/DETAIL LEGEND



GENERAL NOTES

1. CONTRACTOR SHALL ENCASE THE EXIST. 48" INFLUENT FORCE MAIN AS INDICATED ON PLANS.
2. CONTRACTOR SHALL POUR CONCRETE SLAB AND INSTALL THE BYPASS PUMP STATION INCLUDING SUCTION LEG INTO THE WET WELL.
3. CONTRACTOR SHALL INSTALL DISCHARGE PIPING AROUND THE INFLUENT PUMP STATION WITH THE DISCHARGE PIPED INTO THE EFFLUENT CHAMBER. THE CONTRACTOR SHALL COORDINATE THE INSTALLATION OF THE PIPE INTO THE CAMBER WITH THE STAFF OF THE MYRTLE BEACH WASTE WATER TREATMENT PLANT.

INDEX OF SHEETS

- 1 COVER SHEET
- 2 GENERAL NOTES & INDEX
- 3 EXIST. INFLUENT PUMP STATION MODIFICATION LAYOUT
- 4 BYPASS PUMP STATION LAYOUT & SECTIONS

AS-BUILT

RECORD DRAWING OCTOBER 2012

THIS RECORD DRAWING HAS BEEN PREPARED IN PART BASED UPON INFORMATION FURNISHED BY OTHERS, WHILE THE INFORMATION IS BELIEVED TO BE RELIABLE, THE DESIGNER DOES NOT ASSUME RESPONSIBILITY FOR THE ACCURACY OF THIS RECORD DRAWING. THE USER OF THIS RECORD DRAWING SHALL BE RESPONSIBLE FOR VERIFYING THE ACCURACY OF THE INFORMATION FURNISHED BY OTHERS AND FOR THE ACCURACY OF THE INFORMATION FURNISHED BY THE USER OF THIS RECORD DRAWING.

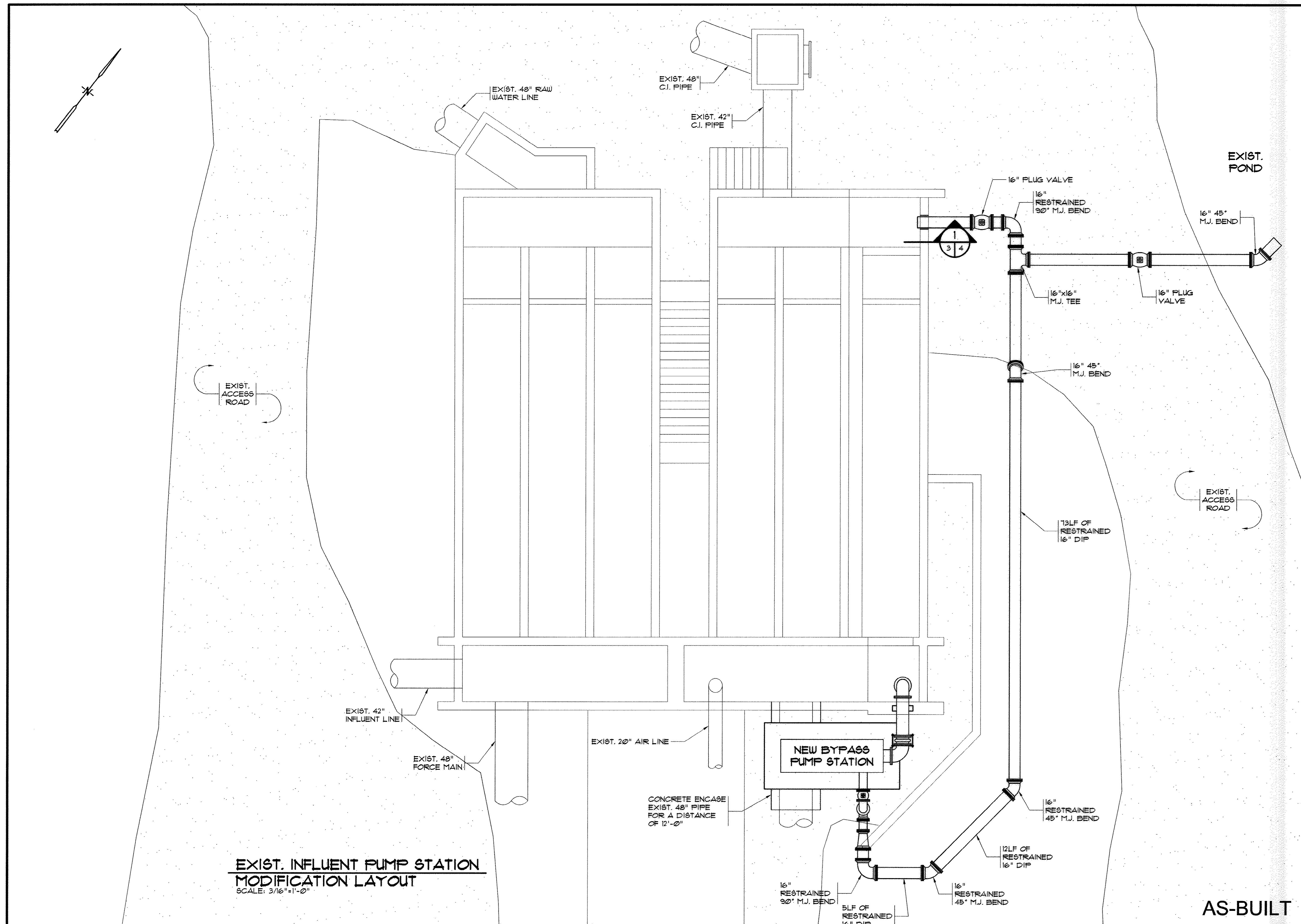
**MARZIANO & MCGAUGHAN, P.A.**  
consulting engineers  
100 SECOND AVENUE • SUITE 201 • CONWAY, S.C. 29526  
Phone: 843.685.8224 Fax: 843.685.8229

GENERAL NOTES & INDEX

MYRTLE BEACH WWTP  
INFLUENT PUMP STATION  
HORRY COUNTY, SOUTH CAROLINA

Scale:	AS SHOWN
Date:	OCT 2012
Drawn:	DC / ALR
Checked:	JWM
Job No.:	31007
Sheet No.:	2
Of:	4
Version:	2

51-013-002/4

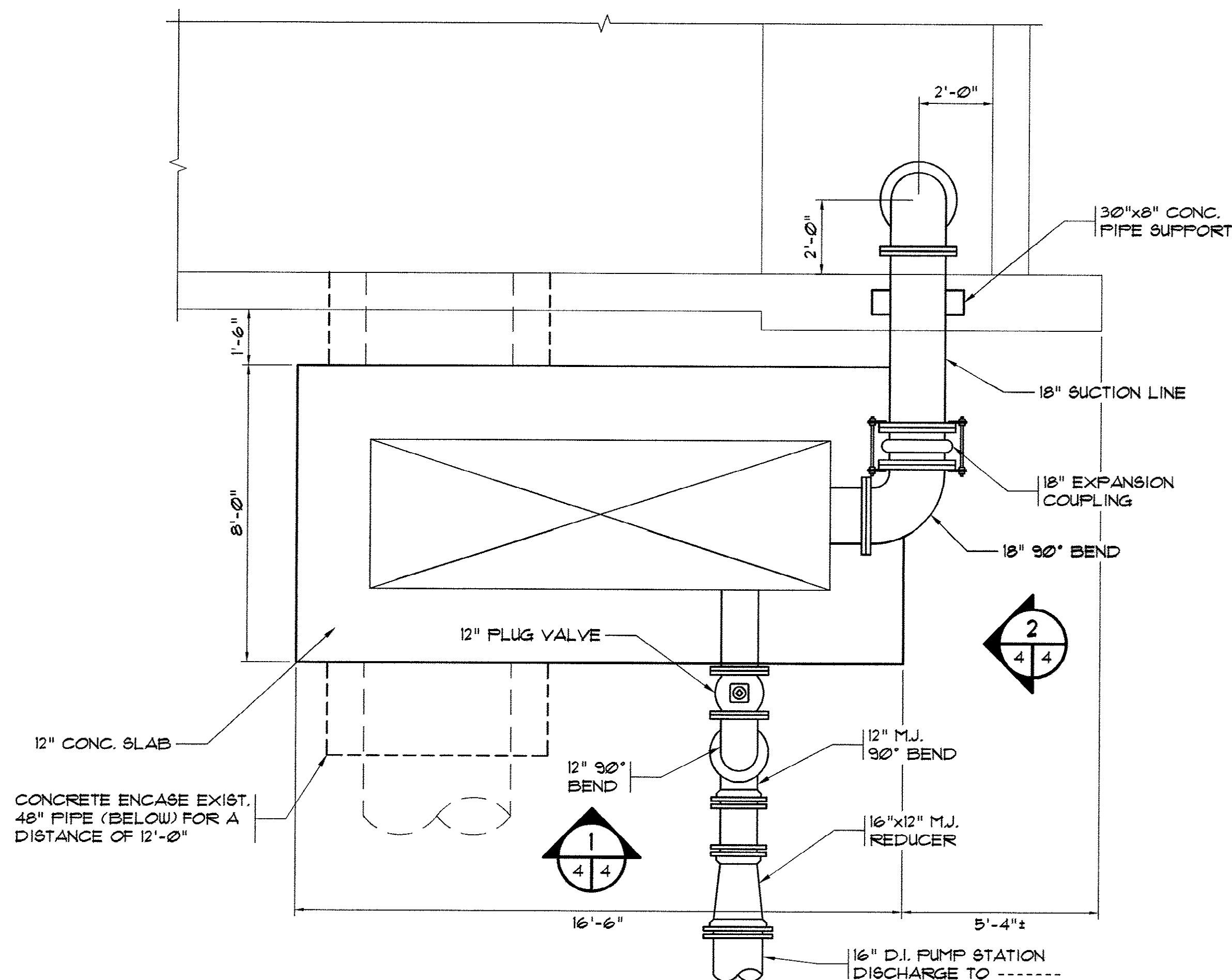


**EXIST. INFLUENT PUMP STATION  
MODIFICATION LAYOUT**  
SCALE: 3/16"=1'-0"

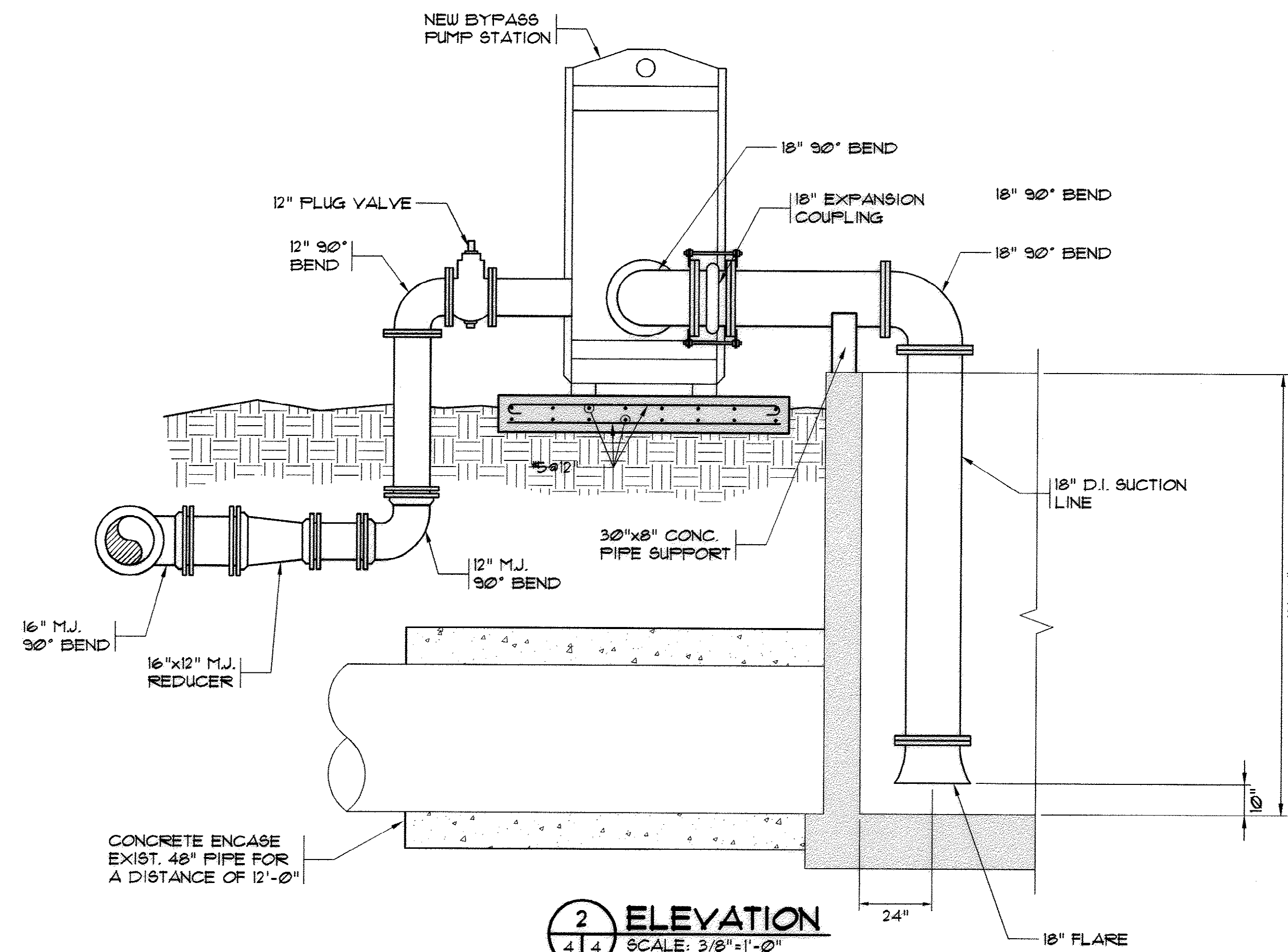
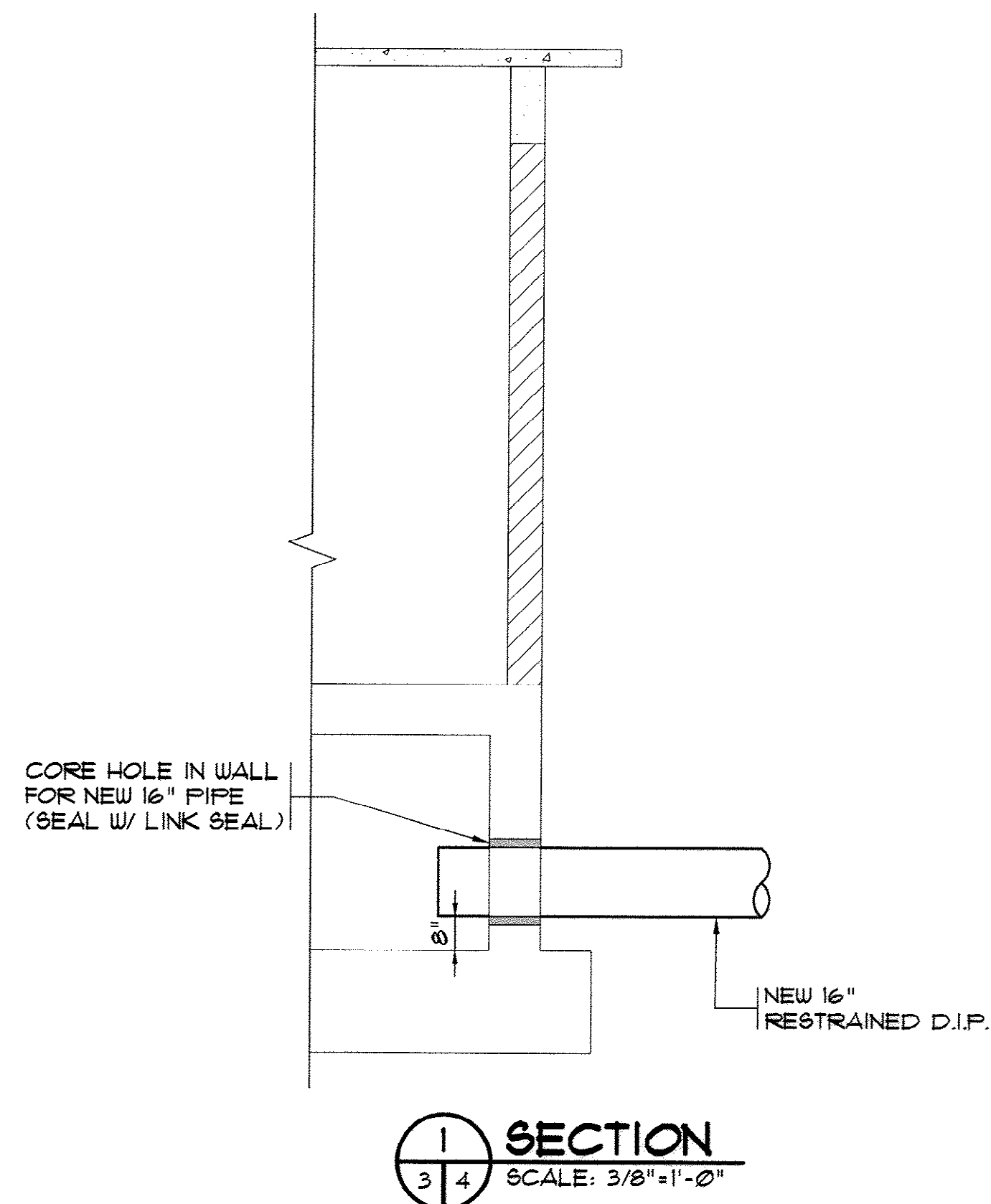
**AS-BUILT**

RECORD DRAWING    OCTOBER 2012	
<small>THIS RECORD DRAWING HAS BEEN PREPARED IN PART BASED UPON INFORMATION BELIEVED TO BE RELIABLE. THE DESIGN INFORMATION IS NOT GUARANTEED AND THE DESIGNER IS NOT RESPONSIBLE FOR THE ACCURACY OF THIS RECORD DRAWING OR FOR ANY ERRORS OR OMISSIONS WHICH MAY BE FOUND HEREIN. THE USER OF THIS RECORD DRAWING SHALL OBTAIN INDEPENDENT VERIFICATION OF ITS ACCURACY BEFORE RELYING ON IT FOR ANY PURPOSE.</small>	
<b>im</b> <b>MARZIANO &amp; MCGOUGH, P.A.</b> CONSULTING ENGINEERS 100 SECOND AVENUE • SUITE 201 • CONWAY, S.C. 29526 Phone: 843.686.0224    Fax: 843.686.0229	
<b>EXIST. INFLUENT PUMP STATION MODIFICATION LAYOUT</b>	
<b>MYRTLE BEACH WWTP INFLUENT PUMP STATION HORRY COUNTY, SOUTH CAROLINA</b>	
Scale:	AS SHOWN
Date:	OCT 2012
Drawn:	DC / ALR
Checked:	JWM
Job No.:	31007
Sheet No.:	<b>3</b>
Of:	4    Version: 2

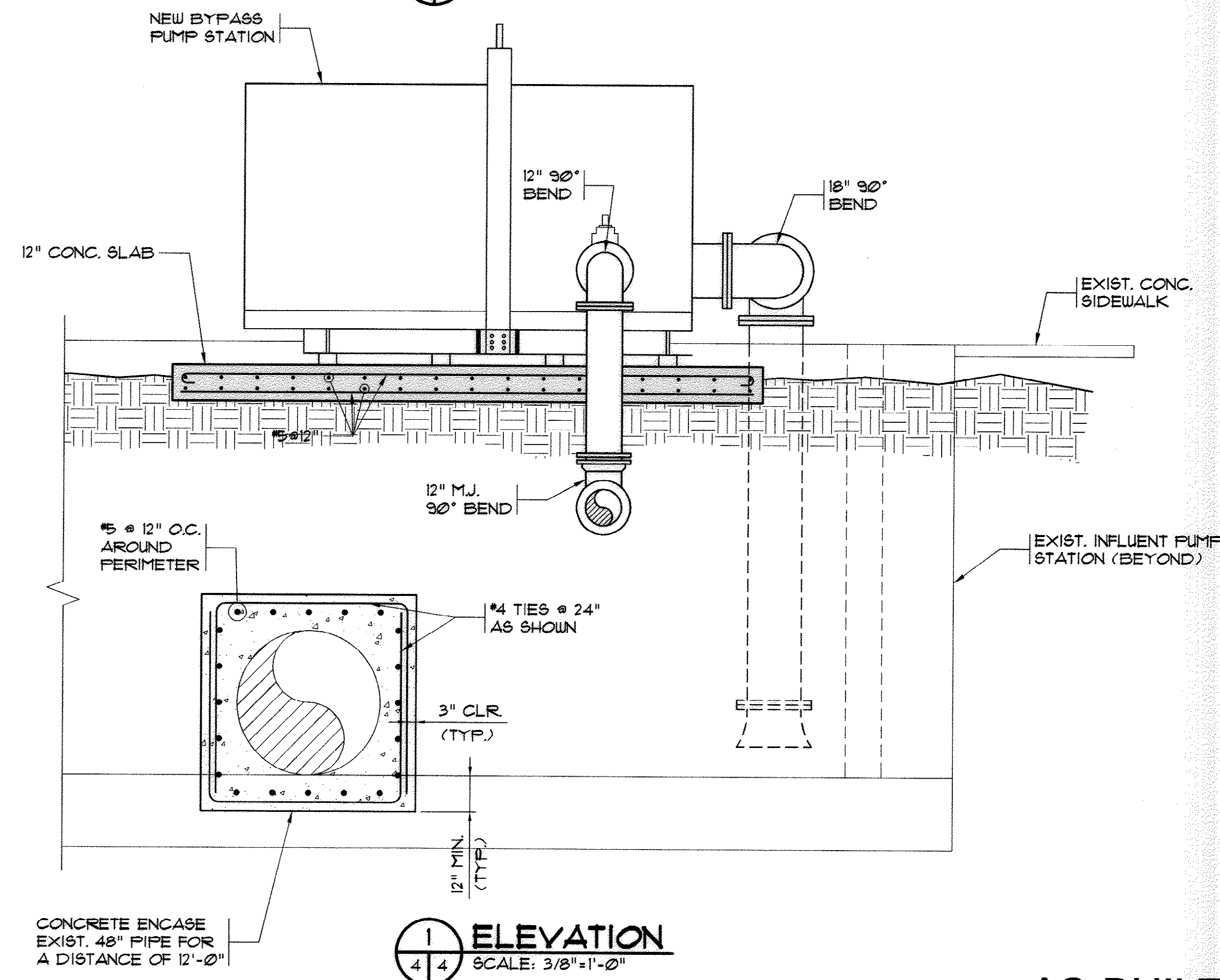
51-013-003/4



**BYPASS PUMP STATION LAYOUT**  
SCALE: 3/8"=1'-0"



**ELEVATION**  
SCALE: 3/8"=1'-0"



**ELEVATION**  
SCALE: 3/8"=1'-0"

AS-BUILT

RECORD DRAWING OCTOBER 2012  
THIS RECORD DRAWING HAS BEEN PREPARED IN PART BASED UPON INFORMATION PROVIDED BY THE CLIENT. THE DESIGN INFORMATION IS BELIEVED TO BE RELIABLE. THE DESIGNER ASSUMES NO LIABILITY FOR THE ACCURACY OF THIS RECORD DRAWING OR FOR ANY ERRORS OR OMISSIONS WHICH MAY BE FOUND HEREIN. THE USER OF THIS RECORD DRAWING SHALL OBTAIN INDEPENDENT VERIFICATION OF ITS ACCURACY BEFORE RELYING ON IT FOR ANY PURPOSE.

**MARZIANO & MCGUGAN, P.A.**  
CONSULTING ENGINEERS  
DANFORD AVENUE • SUITE 201 • CONWAY, SC 29538  
PHONE 843.686.0229 FAX 843.686.0229

**BYPASS PUMP STATION  
LAYOUT & SECTIONS**

**MYRTLE BEACH WWTP  
INFLUENT PUMP STATION**  
HORRY COUNTY, SOUTH CAROLINA

Scale: AS SHOWN  
Date: OCT 2012  
Drawn: DC / ALR  
Checked: JWM  
Job No.: 31007  
Sheet No.:

4  
Of: 4 Version: 2

51-013-004/4