



PUMP STATION NOTES

- NOTES:
1. GRADE PUMP STATION SITE TO DRAIN. PLACE RCP DRAIN TILE FOR DRIVEWAY ACCESS WHEN REQUIRED.
 2. FINISHED ELEVATION AND PS SITE TO BE GREATER THAN ADJ. ROAD.
 3. ACCESS TO SITE - 2 GSWA VEHICLES WITHOUT OBSTRUCTING TRAFFIC.
 4. CONCRETE SIDEWALKS WITHIN THE PUMP STATION ACCESS DRIVE SHALL BE 8" IN THICKNESS.



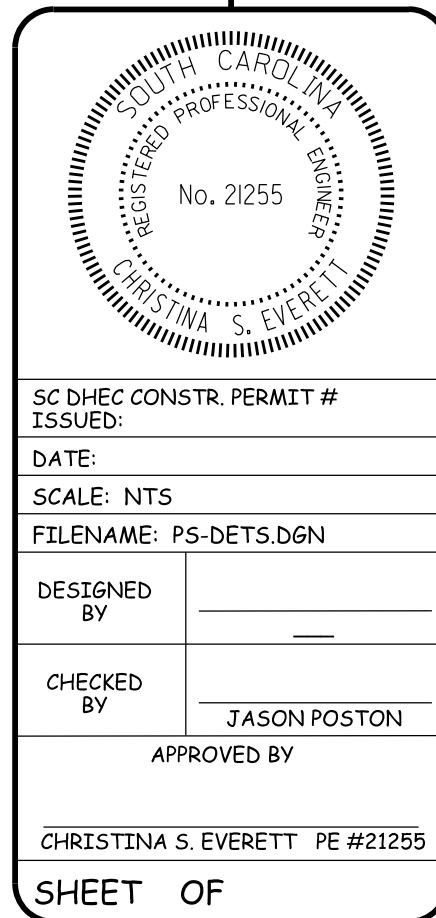
GRAND STRAND
WATER & SEWER
AUTHORITY

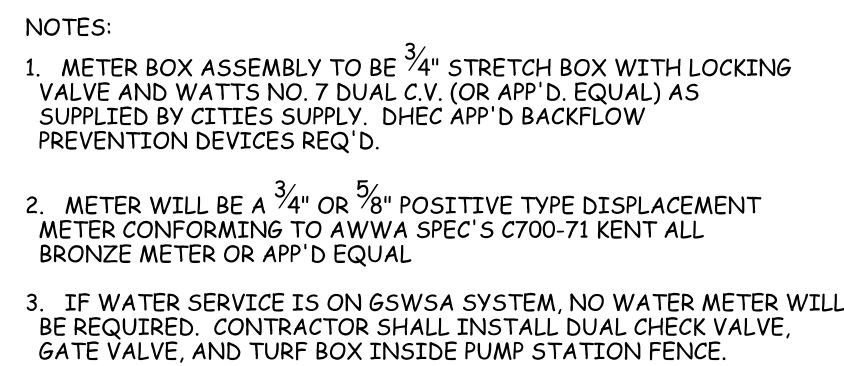
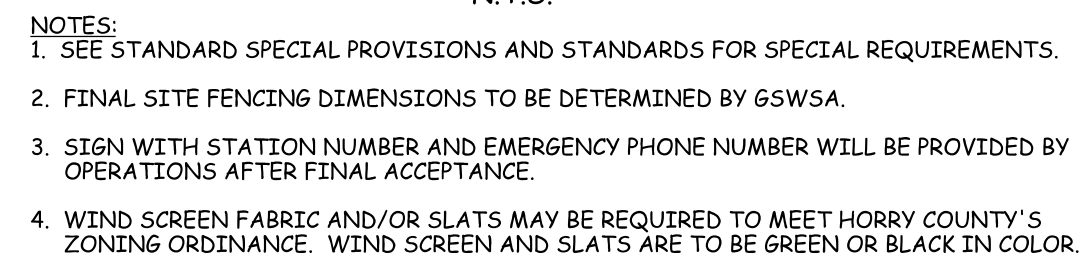
170 JACKSON BLUFF RD.
PO BOX 29888
CONWAY, SC 29528-2388

(843) 347-4641 OR 348-1686
FAX (843) 347-4642
E-MAIL: GSWSA@GSA.COM

PUMP STATION DETAILS

CONT. #	PROJ. #
---------	---------

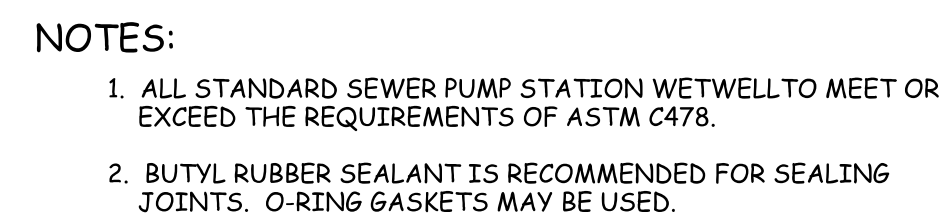
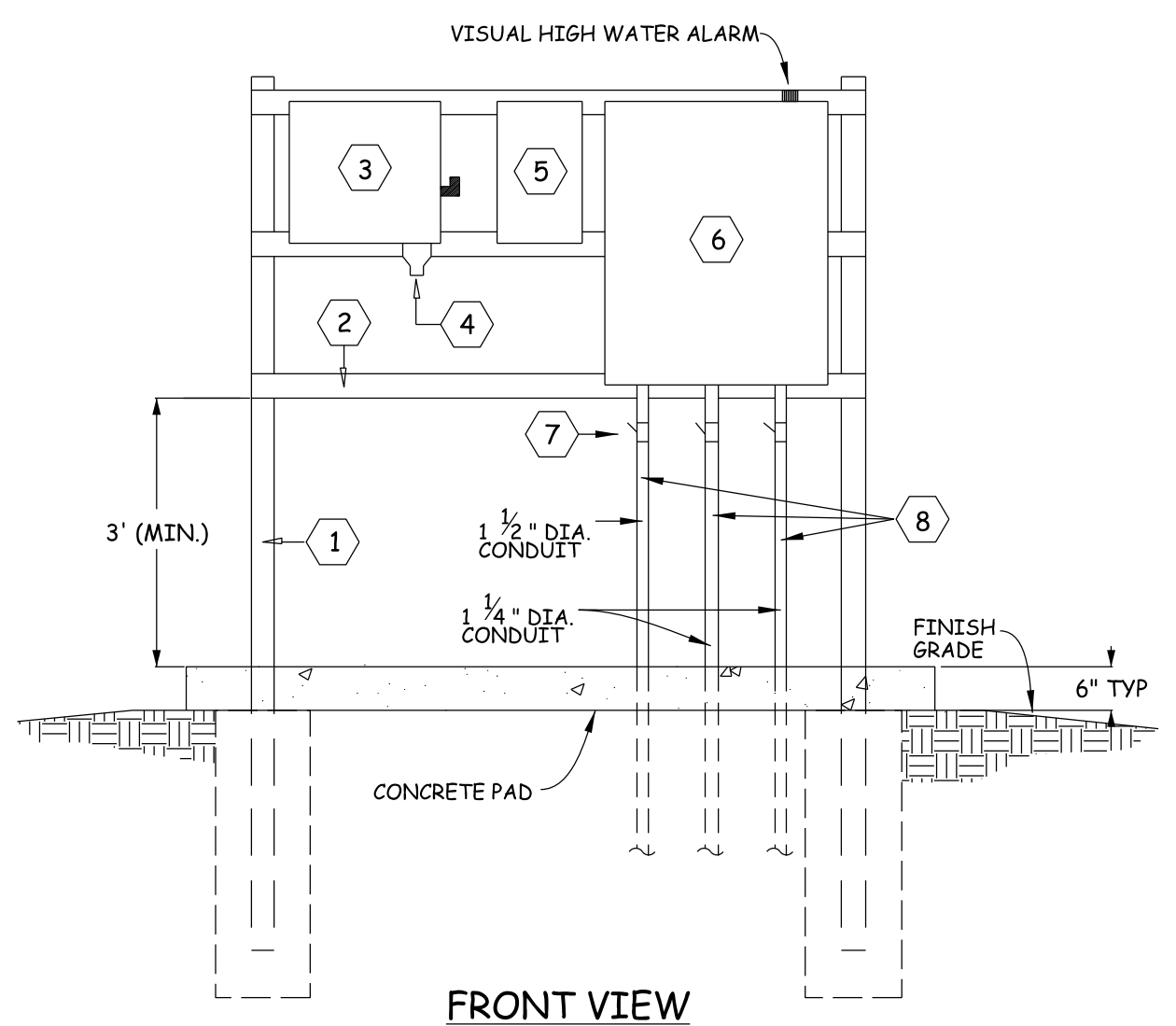




EMERGENCY CONNECTION DETAIL
N.T.S.

- 1 ALUMINUM SQUARE TUBE, 3"x3"x $\frac{3}{16}$ "x9'-3" LONG WITH ALUMINUM 3"x3"x $\frac{3}{16}$ " TOP CAP. SET SQUARE TUBE IN CONCRETE.
- 2 ALUMINUM FLAT BAR 3"x $\frac{1}{2}$ "x6'-6". ALL BOLTS, NUTS, WASHERS, ETC., NECESSARY TO FABRICATE ROD AND INSTALL EQUIPMENT SHALL BE STAINLESS STEEL.
- 3 SQUARE D NEMA 3R DOUBLE THROW SWITCH.
- 4 GROUSE HUNTS #PQ 1047 RECEPTACLE.
- 5 NEMA TYPE 4 GALVANIZED ENCLOSURE. SQUARE D QO OR QIR CIRCUIT BREAKERS.
- 6 PUMP CONTROLLER MOUNT TOP SIX FEET ABOVE SLAB. NEMA 3R STAINLESS STEEL WITH 3 POINT LATCH AND DRIIP SHIELD. PAD LOCKABLE
- 7 EYS SEALOFF FITTINGS WITH DUXSEAL.
- 8 2-1 $\frac{1}{2}$ " PVC CONDUITS TO WETWELL FOR PUMP POWER CABLES. 1-1 $\frac{1}{2}$ " PVC CONDUIT TO WETWELL FOR FLOAT CABLES.
- 9 1 $\frac{1}{4}$ " PVC CONDUIT WITH 4 #214H IN CONDUCTORS TO UTILITY COMPANY TRANSFORMER OR HAND HOLE AS DIRECTED BY UTILITY COMPANY.
- 10 GROUND ROD AND CLAMP.

1. ELECTRICAL WORK SHALL BE PERFORMED BY AN ELECTRICAL CONTRACTOR WITH AN APPROPRIATE BUSINESS LICENSE.
2. ELECTRICAL PERMITS SHALL BE APPLIED FOR AT Horry County Building Inspection Office.
3. SEE PUMP STATION SPECIFICATIONS FOR ALL PLC/RADIO CONTROL REQUIREMENTS AND ALL ELECTRIC AND CONTROL REQUIREMENTS. PLC/RADIO PACKAGE NOT SHOWN.



GRAND STRAND
WATER & SEWER
AUTHORITY

170 JACKSON BLUFF RD.
PO BOX 1000
CONWAY, SC 29528-2368
(843) 347-4641 OR 448-1086

PUMP STATION DETAILS

CONT. # / PROJ. #



SC DHEC CONSTR. PERMIT #	
ISSUED:	
DATE:	
SCALE: NTS	
FILENAME: PS-DETS.DGN	
DESIGNED BY	
CHECKED BY	JASON POSTON
APPROVED BY	
CHRISTINA S. EVERETT PE #2125	
SHEET OF	